

# 2021 ANNUAL REPORT

OCT 2020 - SEP 2021



**ASPPH** ASSOCIATION OF  
SCHOOLS & PROGRAMS  
OF PUBLIC HEALTH  
THE VOICE OF ACADEMIC PUBLIC HEALTH

# A MESSAGE FROM THE PRESIDENT & CEO

2021 marked the 80th anniversary of the Association of Schools and Programs of Public Health (ASPPH). Over the past year, I've found myself reflecting on all that we have accomplished as a community — the growth, perseverance, and leadership of our member institutions, and the dedicated staff who have helped make it all possible.

We have come a long way since we started in 1941 as a small association representing only a handful of US schools of public health. Over 80 years we have expanded our membership base to welcome programs of public health and networks, while strengthening partnerships around the world. We now are composed of over 135 schools and programs of public health, which are the foundation of who we are as an organization. Together, we work every day to strengthen the field of public health and prepare our future leaders to meet the challenges that threaten our communities locally and globally.

As an organization that convenes academic public health thought leaders— faculty, staff, students, and members of the public health community— we value collaboration and learning from others. In doing so, we have seized opportunities to forge partnerships that are transforming how we educate and grow our public health workforce by enhancing educational excellence and eliminating cultural and structural racism. As such, we remain committed to being at the forefront of academic public health and working to solve the world's most pressing public health challenges. As we look forward, we will build on 80 years of effort through three strategic frameworks that will advance the field of academic public health.

## **Dismantling Racism and Structural Racism in Academic Public Health: A Framework**

ASPPH's Task Force on Zero Tolerance of Discrimination and Harassment is focused on leading our efforts to eliminate cultural and structural racism in academic public health. Through the development of a blueprint that outlines the major changes needed to rethink and rebuild processes, procedures, and policies, we are empowering our faculty, staff, and students to dismantle racism in public health institutions.

## **Framing the Future 2030**

Building upon the original 2011-2015 *Framing the Future* initiative, ASPPH has launched *Framing the Future 2030* to transform and improve education for public health. The initiative focuses on inclusive excellence through an anti-racism lens, expanding the reach, visibility, and impact of the field of academic public health, and the creation and adoption of transformative educational models and pedagogy.

## **Climate Change and Health Framework**

This year, ASPPH established a Climate Change Task Force charged with developing a framework through which ASPPH and our members can make an impact in a world rattled by climate change. The goal of the Framework is to create a forward-looking blueprint focused on developing a template for action to address climate change among our members.

We face tremendous challenges ahead, but if history is any indication, our public health community will continue to advance education, research, and practice, challenge the status quo, and support those who are most vulnerable. ASPPH will continue to seek innovative solutions that have positive health outcomes for populations around the world. Thank you to those who have supported us along the way. I feel certain that the best is yet to come.

Warmly,



**LAURA MAGAÑA, PHD, MS**

PRESIDENT & CEO

ASSOCIATION OF SCHOOLS AND  
PROGRAMS OF PUBLIC HEALTH

# A MESSAGE FROM THE CHAIR

Dear Colleagues,

Never in our lifetimes has the advancement of public health solutions been more critical. Your collaborative work is building trust in academic public health each and every day and your leadership, brilliance, commitment, and resilience during this unceasing pandemic has been inspirational.

We have been challenged to address real time crises: the COVID-19 pandemic, increasingly visible racism and violence against people of color, intolerance toward members of the LGBTQ+ community, rapid escalation of gun violence, the irreversible effects of climate change, and ongoing epidemics of chronic disease and opiate use disorder. So doing — even while advancing equity and academic excellence and preserving our own well-being — has been a herculean effort.

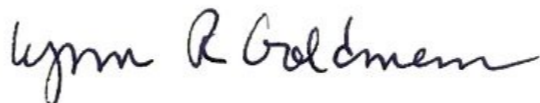
Our colleagues have risen to the challenge and the Association of Schools and Programs of Public Health (ASPPH) has met this moment with unparalleled resolve. There has been an extraordinary level of interest in public health education, and we have remained fiercely committed to excellence in education even as we are preparing an unprecedented number of students to become the next generation of public health practitioners, scholars, and policy makers. At the same time, we have assisted the world's leaders — at every level — in successfully addressing the greatest public health crisis of our generation. Many among our community have generously given time to directly address the concerns of the public and to fight the “infodemic” of mis- and dis-information. I commend you.

ASPPH continues to strive for excellence and deliver on our vision to improve health and well-being for everyone, everywhere. The ambitious goals ASPPH has set out to continue to advance our mission into the next decade are a calling card for our work as an organization and our collective responsibility as a field of practitioners and educators:

- Advancing solutions to the critical public health challenges facing society;
- Championing the development of a diverse and exceptional public health workforce;
- Upholding and advancing excellence and innovation in teaching, research, and practice;
- Being the leading voice and authority on academic public health; and
- Positioning ASPPH for long-term success and sustainability.

This report demonstrates the tremendous success we collectively share and the substantial responsibility we must carry going forward. Despite this trying year, I am filled with hope for our community and our field. Please join me in celebrating life and the pursuit of public health and wellness, including mental health — across the globe.

I am grateful for the critical role you play in our efforts to mobilize the collective power of our members and to drive excellence and innovation in public health education, research, and practice. To those who came forward to volunteer and serve, many thanks! As well, we owe much gratitude to the staff of ASPPH who worked tirelessly behind the scenes during the most difficult of times — to assure our success. As we continue on our journey to a stronger, healthier world, I am honored to be your colleague, supporter, and friend.

Warmly, 



**LYNN GOLDMAN, MD, MS, MPH**

CHAIR, ASPPH BOARD

MICHAEL AND LORI MILKEN DEAN  
OF THE MILKEN INSTITUTE SCHOOL  
OF PUBLIC HEALTH, GEORGE  
WASHINGTON UNIVERSITY



# STRATEGIC PLAN 2030

## GOALS

- Advance solutions to the critical public health challenges facing society.
- Champion the development of a diverse and exceptional public health workforce.
- Uphold and advance excellence and innovation in teaching, research, and practice.
- Be the leading voice and authority on academic public health.
- Position ASPPH for long-term success and sustainability.

## VALUES

  
Diversity, Equity, Inclusion,  
and Social Justice

  
Collaboration

  
Excellence

  
Innovation

  
Agility

  
Commitment to  
Public Health



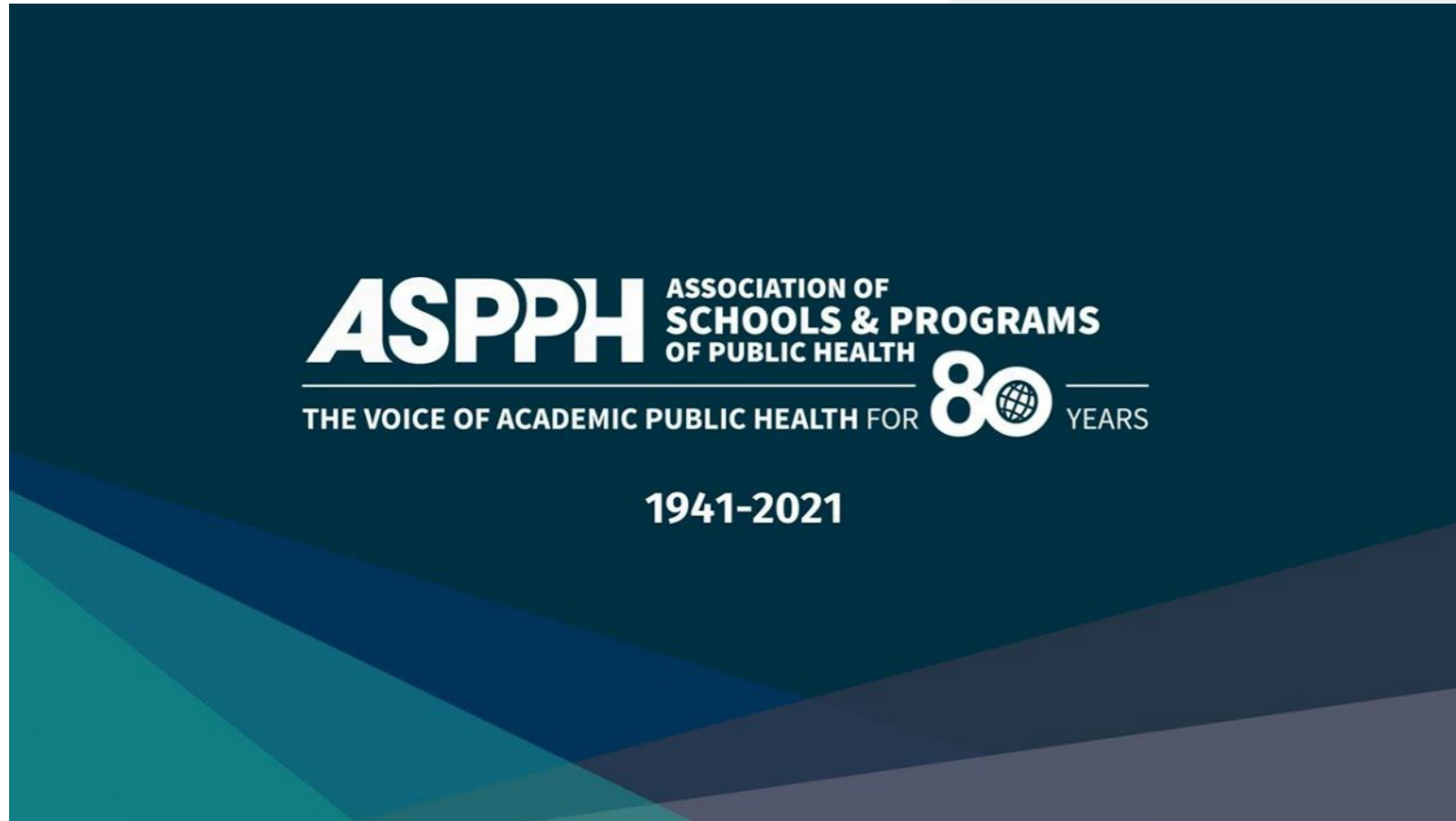
## VISION

Improved health and wellbeing for everyone, everywhere.

## MISSION

Advance academic public health by mobilizing the collective power of our members to drive excellence and innovation in education, research, and practice.

# CELEBRATING 80 YEARS



“

What we've seen is an organization that has so much expanded its reach and its breadth and depth over the years, but I think it has done so quite mindfully, carefully, and will continue to do that. We're beginning to form global networks with institutions that are evolving the education and scholarship of public health and can truly be partners and collaborators of our Association, which is a truly marvelous thing that we see happening globally.

**LYNN GOLDMAN, MD, MS, MPH**

DEAN

GEORGE WASHINGTON UNIVERSITY  
MILKEN INSTITUTE SCHOOL OF PUBLIC HEALTH

“

One thing we've worked on over the years is our advocacy agenda and our voice. We're well positioned to continue to advocate forcefully, clearly, and honestly about what the public needs in order to promote its health and improve its quality of life. I hope it becomes very clear that ASPPH has a voice for public health, not just for academic public health.

**DONNA PETERSEN, SCD, MHS**

DEAN

UNIVERSITY OF SOUTH FLORIDA  
COLLEGE OF PUBLIC HEALTH

# EXPLORE THE REPORT





**COVID-19  
RESPONSE  
INTENSIFIES**

# VACCINE EFFORTS INCREASE

ASPPH and member schools and programs of public health continue to engage in essential research, education, and response activities to prevent and mitigate the pandemic's effects on the health and safety of our world.



Even though vaccines are more accessible than they were a year ago, there are many reasons people may not be fully vaccinated against COVID-19. Ensuring access to the vaccine and factual education is a vital public service and responsibility, which should be encouraged by all.

ASPPH's faculty, staff, and students play an important role, serving as both educators and exemplars with their family members, colleagues, and neighbors. To this end, ASPPH has intensified its efforts to promote vaccinations and advocate for vaccine equity.



> **COVID-19 college vaccine challenge**

> **ASPPH and 13 other public health and health care organizations commit to mandating COVID-19 vaccination for returning to the office**



> **ASPPH supports vaccine mandates and verification efforts by member schools and programs**

> **Acceleration of immunization rates across all ages**

> **ASPPH calls for nation's elected leaders to unite in support of community vaccination efforts**



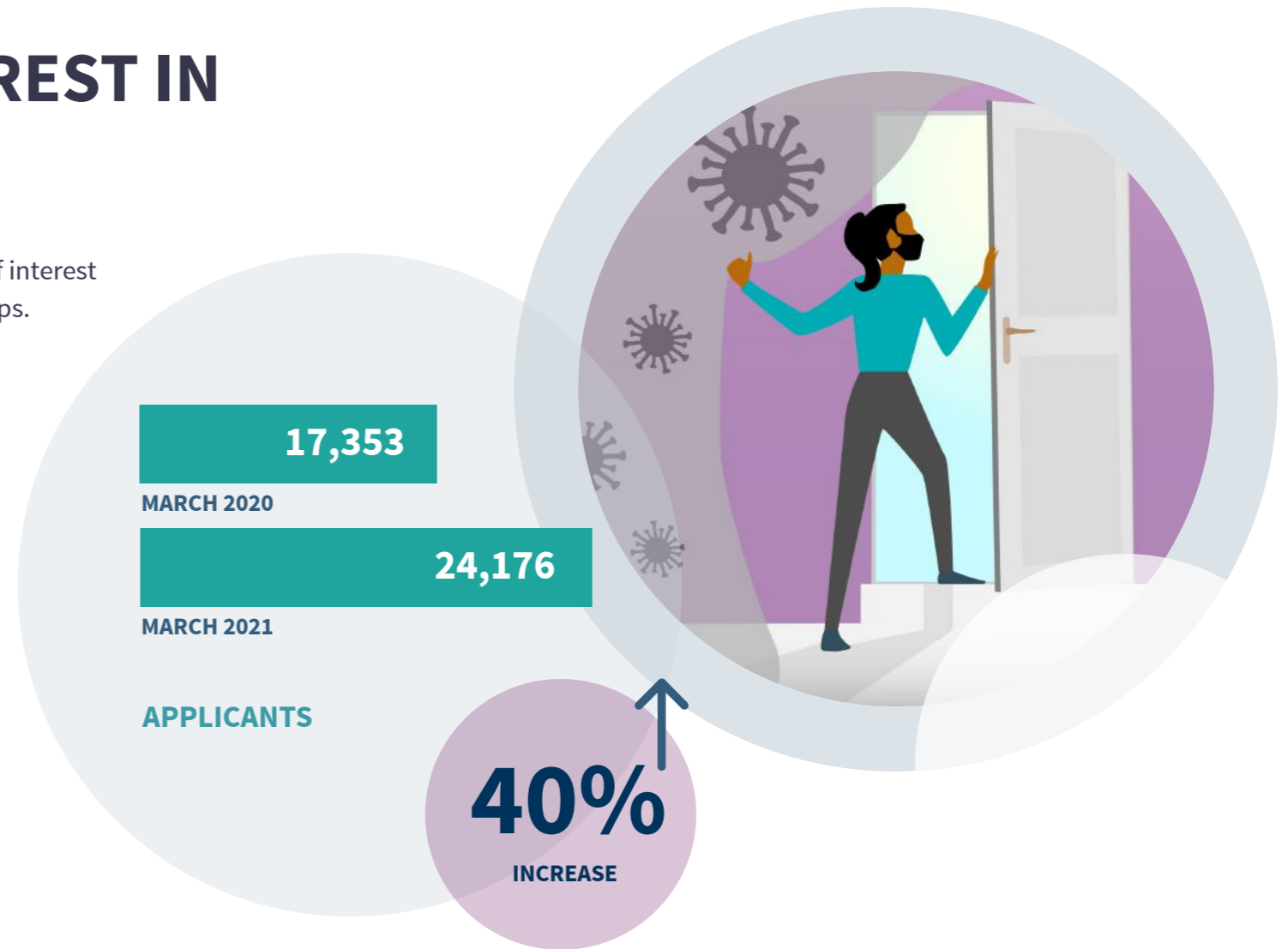
# COVID-19 SPARKS STUDENT INTEREST IN STUDYING PUBLIC HEALTH

Public health is more important now than ever before. The field is experiencing a growth of interest by prospective students across all areas of study and across a variety of demographic groups. During the pandemic, applications to graduate-level public health degree programs saw a 40% increase from March 2020 to March 2021. Additionally, other effects from the pandemic are contributing to the increase: changes to higher education application processes and course delivery, as well as the economic impact on employment.

[Press release](#)

## SOPHAS

These data were derived from ASPPH's centralized application service for public health (SOPHAS), an ASPPH service that allows students to apply to master's and doctoral public health degrees at multiple institutions using one application.



## MEDIA MENTIONS

[Jump to media mentions](#)





**DIVISIVENESS  
POSES A THREAT TO  
OUR HEALTH**

# THE ENEMY IS COVID-19, NOT OUR FELLOW HUMAN BEINGS

While the verdict in Derek Chauvin's trial in April was an important step forward to racial reckoning and restorative justice, we continue to witness example after example of the egregious discrimination that communities of color face daily, and most recently in the rise of crimes targeting Asian Americans.

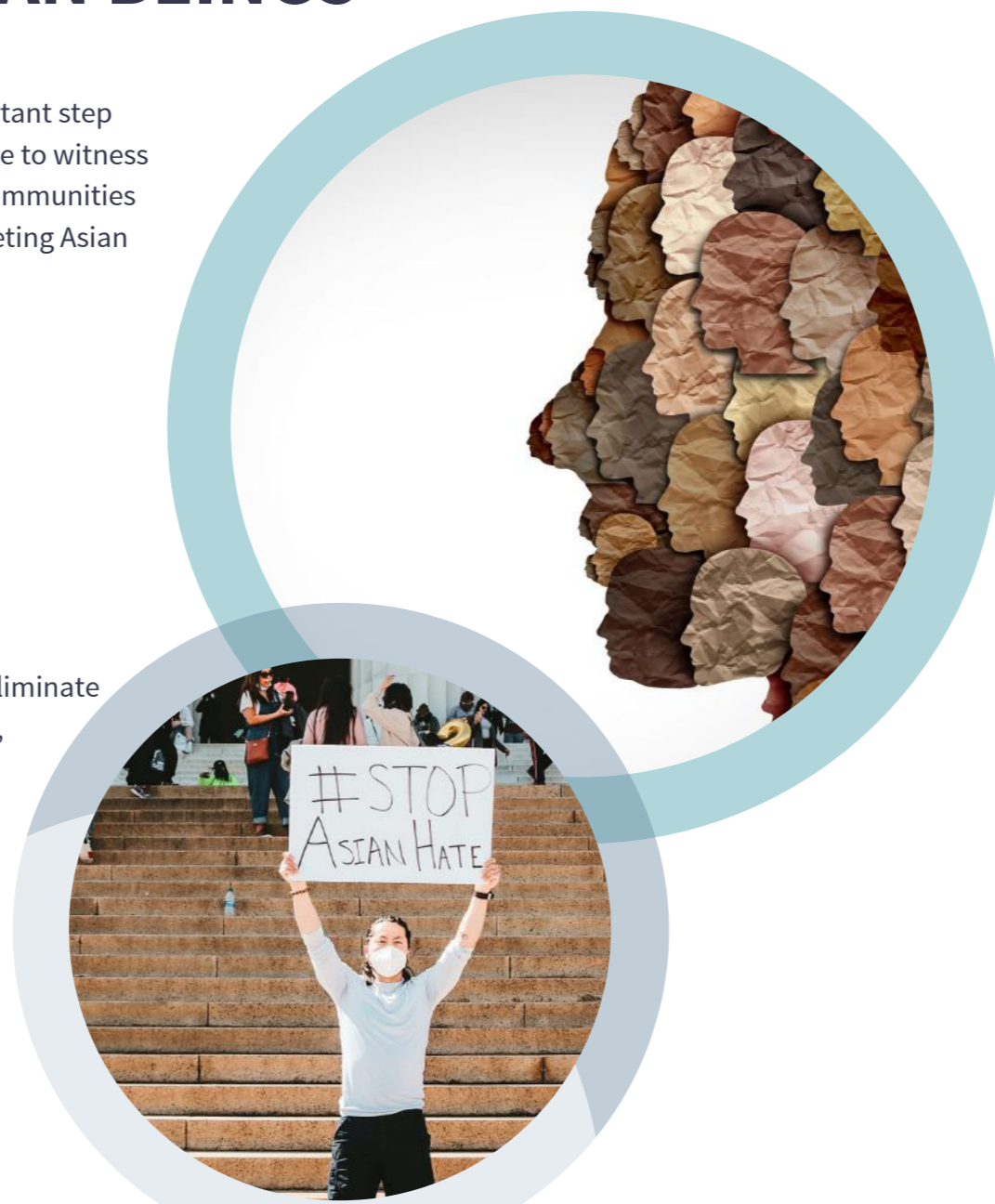
---

**The academic public health community strongly condemns racist and xenophobic statements and actions and will not tolerate harassment and discrimination in any form.**

---

The ASPPH community will continue to work to address and eliminate the structural and systemic barriers that continue to fail Black, Indigenous, and other people of color. ASPPH members stand united in opposing efforts to demonize individuals due to their ancestry or birth country.

[> Statement](#)



The deadly violence against Asian-Americans on March 16 is horrific and senseless. The academic public health community strongly condemns racist and xenophobic statements and actions. ASPPH will not tolerate harassment and discrimination in any form.



This land acknowledgement is just one important action as we work to eliminate the structural and systemic barriers that continue to fail Indigenous communities. Our members stand united in opposing efforts to demonize individuals tied to their ancestry or birth country.



Racism is an ongoing public health crisis, and racial equity is needed to achieve health equity. The public health community must work to transform systems and dismantle policies that perpetuate systemic racism and inequities. #NationalPublicHealthWeek





# **CREATING ROADMAPS THAT SUPPORT QUALITY EDUCATION FOR ALL**





# DISMANTLING RACISM AND STRUCTURAL RACISM IN ACADEMIC PUBLIC HEALTH: A FRAMEWORK

---

**Guided by principles of social justice, ASPPH and its member schools and programs are committed to dismantling racism and ending the cultural and structural conditions that enable racism in academic public health institutions.**

---

The Association's Task Force on Zero Tolerance of Discrimination and Harassment recommitted to efforts focused on the elimination of cultural and structural racism in academic public health through development of a framework, which serves as a blueprint to dismantle the conditions that enable racism in academic public health institutions.

The result is the publication of a single, comprehensive document that builds on all of ASPPH's past and current efforts around inclusion, diversity, equity, and antiracism.

---

**ASPPH's intention is to set out a strategic framework as a model to follow, one that begins with our shared understandings, collective vision and roles, and initial recommendations for a strategic approach for members and partners to build upon.**

---

Racism is a public health crisis that demands bold action on many fronts, including in academic public health. ASPPH begins by being intentional and authentic with an acknowledgement of the long history of cultural and structural racism, along with other forms of discrimination, that have shaped schools and programs of public health and impacted the health and well-being of communities and populations.

This framework outlines the major changes needed to rethink and rebuild processes, procedures, and policies to dismantle the conditions that enable racism in academic public health institutions, and empower all faculty, staff, and students to succeed in the 21st century.

Together, ASPPH is uniquely positioned to serve as the leader and national convener for the wider academic public health community in advancing public health justice in all populations by training the next generation of leaders who are committed to a bold IDEA of Inclusion, Diversity, Equity, and Antiracism. ASPPH's IDEA focuses the good work already underway in diversity, equity, and inclusion, with the growing call to adopt antiracism as the path to the desired future state it is seeking for schools and programs of public health. This is our IDEA for Academic Public Health Justice. This is the foundation of our vision:

---

**Prepare a 21st century public health workforce that is equipped to achieve the ultimate vision for public health – the protection and promotion of health of all people across all populations.**

---

[> Read the framework](#)



# FRAMING THE FUTURE 2030

EQUITABLE, QUALITY EDUCATION IN PUBLIC HEALTH FOR ACHIEVING HEALTH EQUITY AND WELL-BEING FOR EVERYONE, EVERYWHERE



**INCLUSIVE EXCELLENCE  
THROUGH AN ANTI-RACISM LENS**



**TRANSFORMATIVE EDUCATIONAL  
MODELS AND PEDAGOGY**



**EXPANDING THE REACH, VISIBILITY,  
AND IMPACT OF THE FIELD OF  
ACADEMIC PUBLIC HEALTH**

Key ASPPH advisory committees and sections, along with vested partners in academic public health, will be invited to vet drafts, with the final ASPPH-board-approved products expected in 2023.

[More information](#)

**ASPPH**  
**FRAMING THE FUTURE**  
**EDUCATION FOR PUBLIC HEALTH 2030**

# UNDERGRADUATE NETWORK FOR EDUCATION IN PUBLIC HEALTH

ASPPH supports a network for undergraduate leaders and faculty to align the continuum of education from undergraduate to graduate education.

In 2021, ASPPH received funding from Dr. Richard and Mrs. Linda Riegelman to support a partnership between ASPPH and The League, an international nonprofit organization with a mission to cultivate innovation in the community college environment. ASPPH collaborates with The League to expand opportunities for community college students to learn more about public health. Through this project, ASPPH Student Ambassadors connect with community college students to promote public health and recruit students to study public health.

[More information](#)



# ADVANCING SCHOLARLY TEACHING AND LEARNING

The Scholarship of Teaching and Learning Task Force produced two new evidence-based products to support members in research, practice, and publishing on teaching and learning.

**Institutional Programs, Practices, and Policies in Public Health Pedagogy** advances evidence-based methods to research, practice, document, and publish on teaching and learning. A data report on programs, practices, and policies in the consumption and production of scholarly teaching and learning, this document covers topics ranging from opportunities and resources that support faculty development of teaching and learning to faculty funding and time allotted for research on teaching and learning.

[Access report](#)

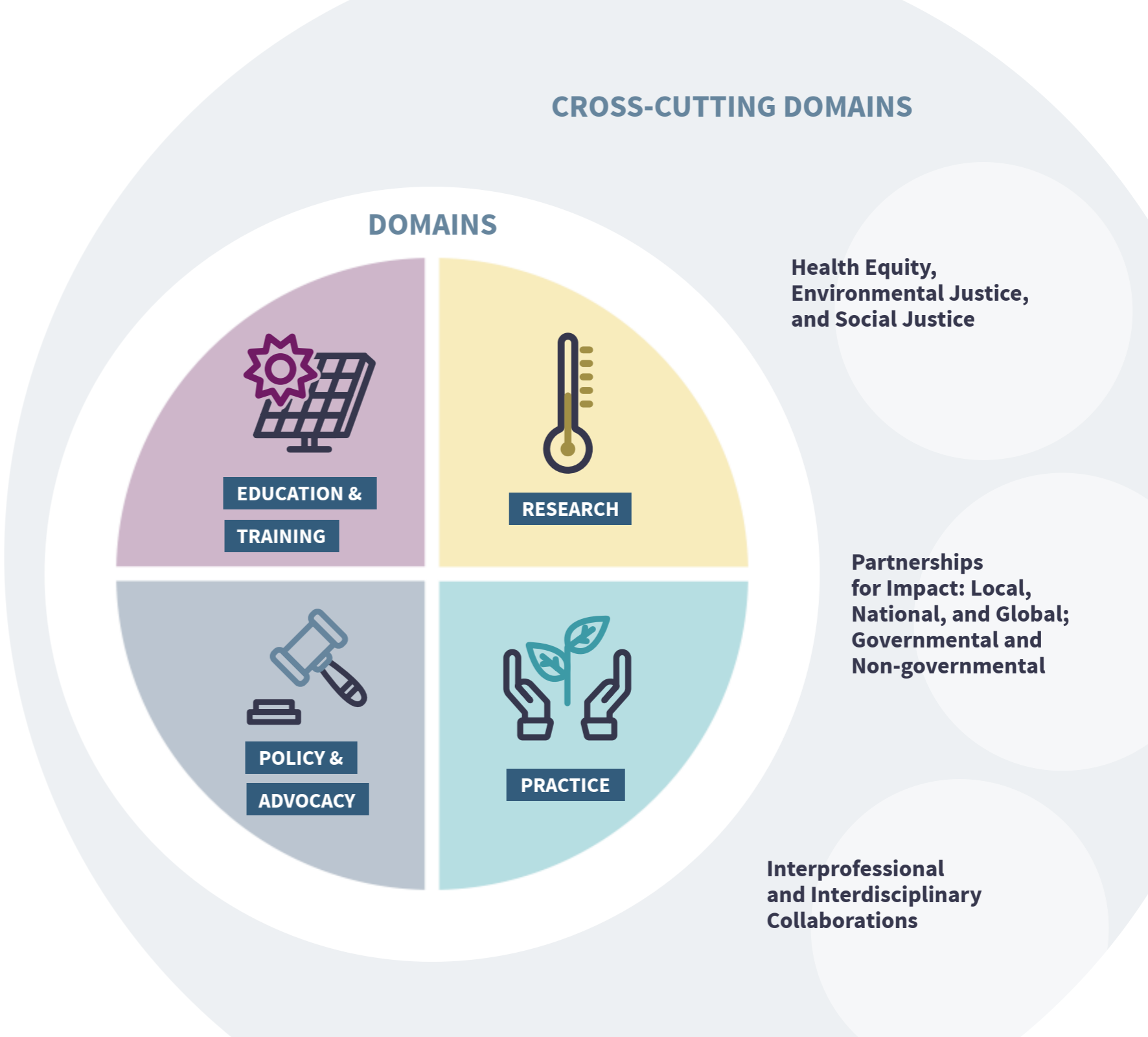
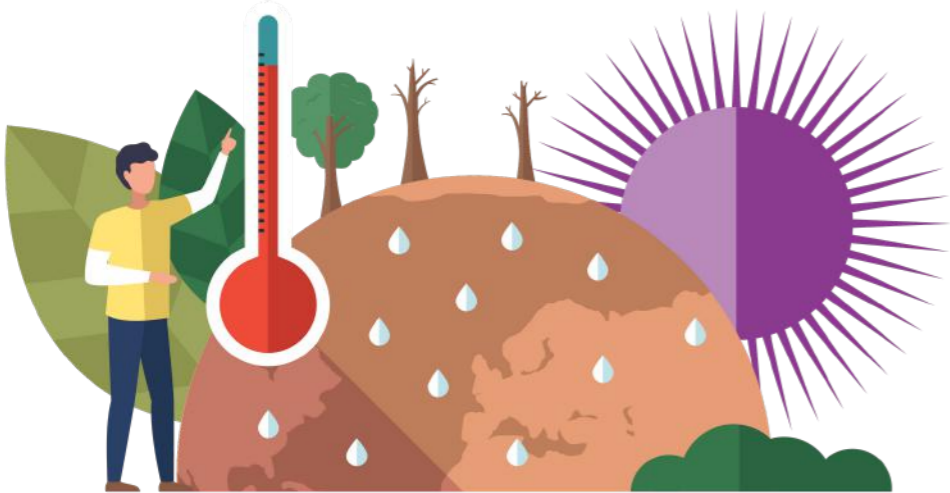
**Realizing Promising Educational Practices in Academic Public Health: A Model for the Scholarship of Teaching and Learning** provides critical considerations for implementing theory-informed steps to advance the scholarship of teaching and learning in academic public health.

[Read takeaways](#)

# CLIMATE CHANGE & HEALTH

ASPPH established a Climate Change Task Force charged with developing a framework through which ASPPH and its member schools and programs of public health can make a difference with regard to climate change. The goal is to create a forward-looking framework that will bring synergies and a template for action for addressing climate change among its members.

- > **Statement declaring climate change a public health emergency and calling for immediate actions**
- > **Letter to Members of Congress and the President urging infrastructure investments to mitigate climate change**







# **A CALL TO STAND TOGETHER**

**IN GLOBAL SOLIDARITY AS  
AN ACADEMIC PUBLIC  
HEALTH COMMUNITY**

# GLOBAL NETWORK

During a year fraught with global crises that impact the health of all people, it is more important than ever that academic public health institutions around the world work together—to share, learn, collaborate, and act—to prepare the current and future public health workforce to meet the challenges of tomorrow. Composed of seven regional associations, including ASPPH, the Global Network for Academic Public Health (Global Network) enhances academic public health worldwide through mutual learning and collaboration between academic public health institutions globally in order to improve and protect the health of people and the planet.

## GLOBAL GOVERNANCE FOR HEALTH

In advance of the World Health Assembly's November meeting on pandemic preparedness, the Global Network released ***Global governance for improved human, animal, and planetary health: the essential role of schools and programs of public health.*** The paper outlines the the following:

**Key roles of schools and programs of public health in responding to the current pandemic**

**Additional skills that the public health workforce needs**

**The requirements essential for better global governance for health and better response to future pandemics**



---

**The Global Network calls for substantial investment in public health education, training, and research, particularly through schools and programs of public health worldwide as leaders in these areas.**

---

# GLOBAL GRANTS

The first This Is Public Health® (TIPH) Global Grant Program has passed the six-month mark, and the awardees are making great progress toward their goals. The 20 awardee institutions represent 18 countries from around the world, and their projects focus on a range of public health issues from antibiotic resistance to water and sanitation hygiene.

[View the full list of awardees](#)



## AWARDEE PROJECT SPOTLIGHT

### PUBLIC HEALTH NOW – BUILDING ON RICH TRADITION AND SUCCESSES, LET’S RESPOND TO THE CHALLENGES OF THE FUTURE!

Jagiellonian University’s project focuses on raising awareness about public health and enhancing the visibility and understanding of public health issues in Poland and other European countries. They have held classes with secondary school students, conducted webinars for public health professionals, and implemented several social media campaigns on a variety of public health issues to promote public health education. These activities reached 500 secondary school students, 500 public health professionals, and over 20,000 social media followers, respectively.

INSTITUTE OF PUBLIC HEALTH, FACULTY OF HEALTH SCIENCES

JAGIELLONIAN UNIVERSITY MEDICAL COLLEGE, POLAND

### “ GLOBAL AMBASSADOR HIGHLIGHT

The desire to see people live above diseases first created my passion for public health. Also knowing that public health affords the opportunity to reach the unreached, thereby impacting lives and ensuring that people don’t become victims of diseases that can be prevented further fuels the passion.

BLESSED EGBUCHULAM

UNIVERSITY OF IBADAN, NIGERIA



# GLOBAL VISIBILITY

Engaging in conversations around the world.



**ASPHER DEANS AND DIRECTORS RETREAT**

**UNIVERSIDAD DE SAN CARLOS DE GUATEMALA COMMENCEMENT**

**PAN AMERICAN HEALTH ORGANIZATION (PAHO) CORE INDICATORS FOR THE AMERICAS**

**TROPED 25TH ANNIVERSARY CELEBRATION**

**EL COLEGIO NACIONAL DE MÉXICO**

**30TH ANNIVERSARY OF ACADEMIC PUBLIC HEALTH IN POLAND**

**3-D COMMISSION UN GENERAL ASSEMBLY REPORT LAUNCH**

**G20 PUBLIC HEALTH WORKFORCE: A LABORATORIUM FOR IMPROVING TRAINING IN PREVENTION, PREPAREDNESS, AND RESPONSE TO HEALTH**

**INSTITUTO NACIONAL DE SALUD PÚBLICA (INSP) 100 YEARS CELEBRATION: REFLECTIONS ON THE FUTURE OF PUBLIC HEALTH**





# **SUPPORTING WORKFORCE PATHWAYS**

**TO SOLVE THE WORLD'S MOST  
PRESSING PUBLIC HEALTH  
CHALLENGES**

# CHAMPIONING THE DEVELOPMENT OF DIVERSE AND COMPETENT STUDENT LEADERS



## DISCOVER

Through its This is Public Health campaign, ASPPH raises awareness about education and career options in public health through interprofessional activities, graduate fairs, and skill-building events for students.



## INFORM



[Viewbook](#)

Resources to help find the graduate program that's right for you.

## DECIDE/APPLY



[Learn about SOPHAS](#)

Apply to multiple public health institutions using one application.



## CONNECT



[Meet the Ambassadors](#)

Showcasing their passion, Student Ambassadors raise awareness about public health issues, careers, and education.

## RETAIN/DEVELOP



[Public Health Jobs](#)

Find your place in the public health field. Kick start your job search and advance your career.



## FINISHED WITH UNDERGRAD ?



## TIPH AMBASSADOR HIGHLIGHT

Public health has given me more than just a higher purpose for the community, but has also led me to cross paths with incredible colleagues, friends, and countless of memories on and off the work clock.

**BRYCE TAKENAKA, MPH**

**SAINT LOUIS**



# FELLOWS & INTERNS

ASPPH fellowship programs offer opportunities for current master's and doctoral level students and recent graduates to round out their academic training and gain hands-on public health experience while continuing to develop professional skills and expertise in public health. On-site mentoring from public health professionals provides valuable career guidance and networking opportunities.

[> Learn more](#)



**GRACE LIU, MPH**  
COLUMBIA



Grace Liu (Columbia University Mailman School of Public Health) published in the *Morbidity and Mortality Weekly Report* based on research conducted during her ASPPH fellowship in CDC's National Center for Injury Prevention and Control (NCIPC), Division of Violence Prevention. Liu focused her efforts on the intersection of social norms with sexual violence and child maltreatment.

[> Published paper](#)



Dana Williamson (Emory University Rollins School of Public Health), ASPPH/EPA Environmental Health Fellow, trained under the guidance of mentors within EPA's Office of Science Advisor, Policy & Engagement, Office of Research and Development. "Participation in the ASPPH fellowship program provided me with training and tools to expand my thinking, reshape my sphere of influence, and enhance my ability to translate/reframe public health complexities to influence policy decisions."



**DANA WILLIAMSON , PHD**  
EMORY



**GLENDEDORA DOLCE , MPH**  
EMORY



Glendedora Dolce (Emory University Rollins School of Public Health) was based at the Office of Impaired Driving and Occupant Protection in Washington, DC during her time as an ASPPH/NHTSA fellow. "I aspire to protect and save lives on our roads and highways through education, awareness, and prevention. I chose to do the ASPPH Fellowship with the NHTSA's Impaired Driving and Occupant Protection office because it allows me to expand my public health experience and gain skills within the field of traffic safety and injury prevention."

[> Webinar](#)



# FELLOWS & INTERNS



## “ ASPPH RACIAL JUSTICE INTERN

Damaris Bell joined ASPPH as the first Racial Justice Intern. Her work focuses on gathering and organizing resources, products, curricula, and tools that showcase promising practices and exemplars developed at our member institutions to defeat racism and structural racism. During her internship she spoke with multiple deans, directors, and other faculty and staff members from over 20 schools within the ASPPH membership to gain insight on the changes being made to encourage more inclusive, diverse, and anti-racist schools and programs of public health. “I am passionate about bringing impactful and sustainable change in the health outcomes of minority communities and discovering solutions to help disseminate the health barriers linked to socioeconomic status of these communities, which include having access to quality education in a safe and inclusive environment.”

**DAMARIS BELL , MPH**

WEST VIRGINIA



## “ ASPPH CLIMATE CHANGE AND HEALTH FELLOW

Rebecca Fournier is ASPPH’s first Climate Change and Health Fellow. Becca spent a few years after college working in education and mental health counseling before attending the University of Massachusetts Medical School (UMass) for two years, ultimately deciding to pivot to public health due to her passion for environmental science, preventive care, population-based intervention, and issues in equity. She is currently working to conclude her MS in Medical Science from UMass through a capstone project on the inadequacy of nutritional education in US medical school curricula. Rebecca is providing research and writing support to the ASPPH Climate Change and Health Task Force as they develop a framework for members to make a difference in regard to climate change.

**REBECCA FOURNIER, MPH**

EMORY



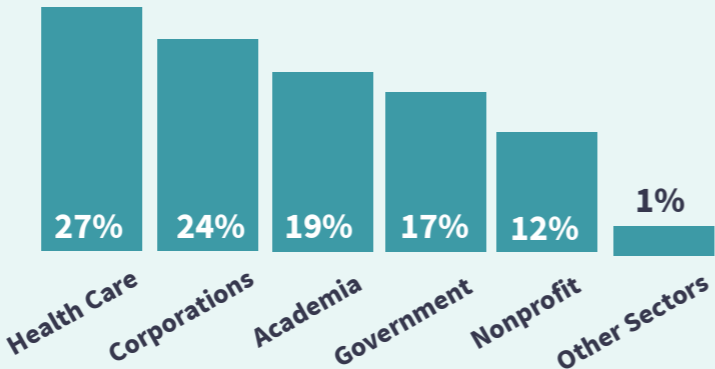


# UNDERSTANDING THE FUTURE OF THE PUBLIC HEALTH WORKFORCE

**53,000+**  
Graduates of ASPPH-member schools and programs of public health from academic years 2015-2018 provided information on their first destination after graduation.

**26,422**

Graduates provided data on their employment sector.



**73%**  
of graduates were employed

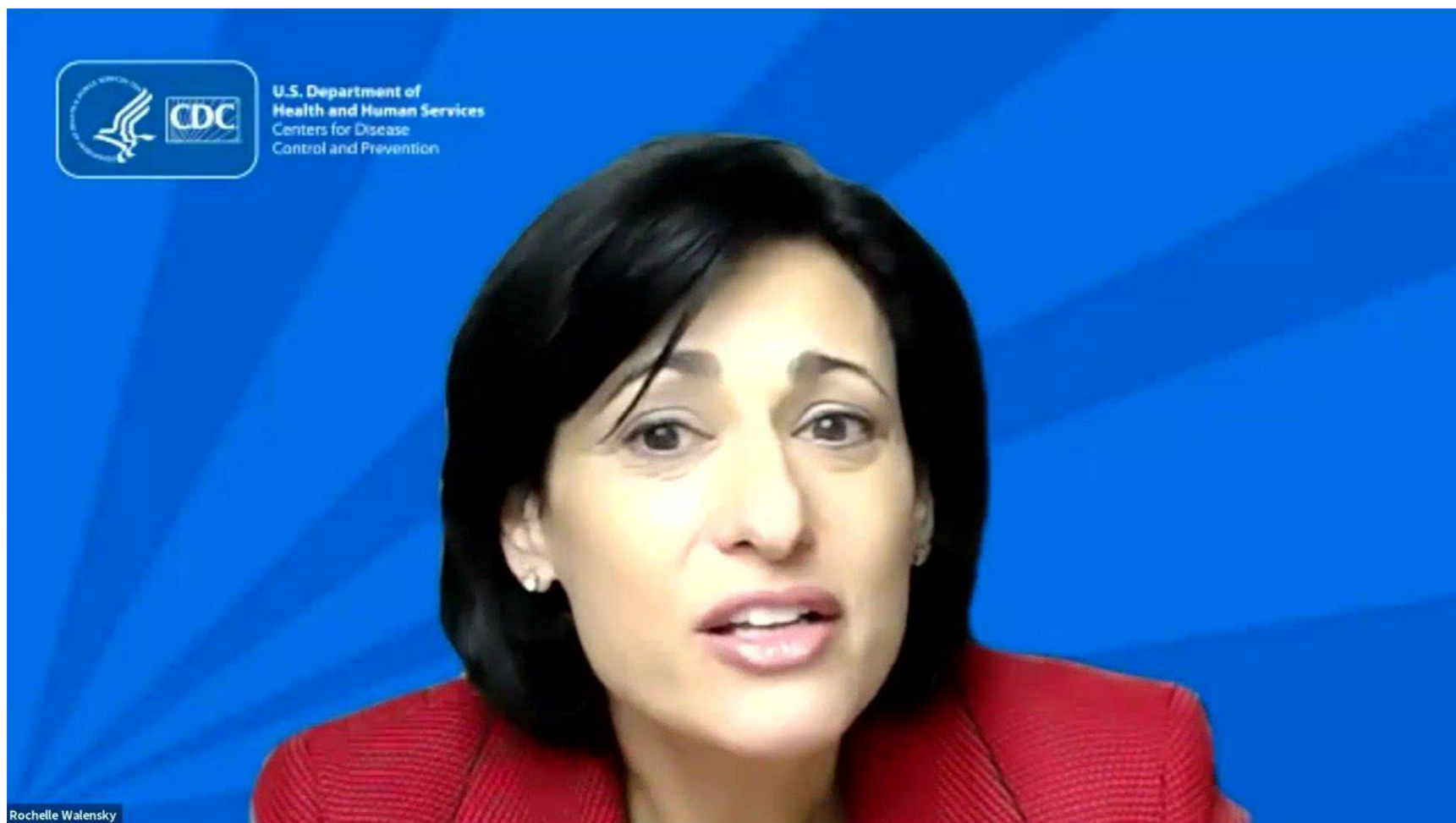
**15%**  
Further Education

**5%**  
Fellowships, Internships, Residencies, Volunteers

**6%**  
Not Employed

- > **First-destination outcomes for 2015-2018 public health graduates: Focus on employment**
- > **The abuse of public health professionals during the pandemic**
- > **Long-term investments in public health infrastructure and workforce development to promote healthier communities**
- > **We stand with public health: A call to action**

# CHAMPIONING EDUCATION FOR PUBLIC HEALTH, INSPIRING A PASSION FOR PUBLIC HEALTH IN THE NEXT GENERATION OF LEADERS



“

You, the students, are what will define our future. You are the next generation of public health. Your public health story is waiting to be written, and wherever you go in public health, know that there are many opportunities, big and small, to be an agent of change. You are the ones who can improve health for our nation and our world, and we need you to make it better.

**ROCHELLE WALENSKY, MD, MPH**

CDC DIRECTOR



# LEADERSHIP DEVELOPMENT

ADVANCING COLLABORATION,  
COALITION BUILDING, AND  
SHARED KNOWLEDGE



# ANNUAL MEETING

Academic public health leaders, faculty, staff, students, and practitioners from around the world convened virtually for three days in March to explore and discuss ideas and practices in education, public health, and global health.

**3** DAYS

**25** COUNTRIES

**40** SESSIONS

**95%**

ASPPH MEMBERS REPRESENTED



“

We must improve equity, collaborate across disciplines, build better data systems, and invigorate the workforce to improve the health of the entire nations.

**ROCHELLE WALENSKY, MD, MPH**

CDC



“

Everyone who is in public health should realize, you are living through a historic time. Whatever aspect of public health you're in, you can make a contribution. Not just to the country, but to the world.

**ANTHONY FAUCI, MD**

NIH



“

COVID doesn't ask your citizenship before it attacks. Cancer doesn't ask if you have a green card. Disease does not inquire as to your residency status before it assails you and spreads broadly...no matter how you got here, we're all in it together now.

**STACEY ABRAMS, MPA, JD**

FAIR FIGHT



# UNDERGRADUATE CONFERENCE FOR EDUCATION IN PUBLIC HEALTH

This year, for the first time, ASPPH convened a stand-alone conference focused on undergraduate education for public health. In the opening session, Dr. Rachel Levine, 17th assistant secretary for health for the US Department of Health and Human Services (HHS), recognized the contributions of the public health workforce during the COVID-19 pandemic and highlighted the need for a well-trained public health workforce. Her remarks set the stage for an exceptional panel discussion exploring efforts to build on the interest in studying public health, including students from other disciplines, increasing the diversity of faculty and students in public health, and discussing the skills needed by the future public health workforce to protect the health of our communities.

The one-day virtual event included plenary and concurrent sessions exploring the latest research, ideas, and practices in undergraduate education in public health.



As leaders who work in undergraduate public health programs, you are able to help set the standard for equity, inclusion, and diversity to cultivate a robust, sustainable public health workforce for the future.

**RACHEL LEVINE, MD**

ASSISTANT SECRETARY FOR HEALTH, HHS

**70** PRESENTERS

**12** CONCURRENT SESSIONS

**17** POSTER PRESENTATIONS



# SECTIONS RETREAT

The Sections Retreat provides opportunities for members to share promising practices, increase knowledge, and explore innovative solutions at schools and programs of public health. The retreat began with an opening plenary session titled, “Our Journey to Being Anti-Racist Academic Public Health Institutions,” featuring a Section member panel discussion.

Other general sessions included “Building Resilience for Leadership” and a discussion on “Planning for Fall 2021.” In addition to the plenary and general sessions, each Section hosted sessions developed for their group.

Section members are leaders in the following areas:

ACADEMIC AFFAIRS

DATA

DIVERSITY & INCLUSION

FINANCE & ADMINISTRATION

PRACTICE

RESEARCH

STUDENT AFFAIRS

350+ MEMBERS



# LEADERSHIP RETREAT

Our Leadership Retreat convenes member deans and program directors to engage in discussions and share experiences and perspectives with peers to gain insights into important topics in academia and public health challenges.

Heather McGhee, author of *The Sum of Us: What Racism Costs Everyone and How We Can Prosper Together*, began the retreat with an inspiring presentation, followed by discussions centered around health equity. The Retreat also provided an opportunity to celebrate and honor 80 years of excellence.

[View the agenda](#)



HEATHER MCGHEE, JD  
BOARD CHAIR, COLOR OF CHANGE



## WHAT WE DISCUSSED IN 2021

- Things That Keep Us Up at Night
- The Power of Resilience for Academic Leaders
- The Role of Academic Public Health Leaders in Changing the Narrative About Health

# LEADERSHIP CONVERSATIONS

To support its members, ASPPH created space for deans and directors to convene to discuss critical issues facing academic leaders. The virtual programs are facilitated by members sharing their expertise and provide opportunities to explore issues, share insights, and network.



## WHAT WE DISCUSSED IN 2021

- **Building increased interest in studying and working in public health**
- **Policies around mask wearing and vaccine mandates**
- **Perspectives into how to work with the media to communicate accurate public health information**
- **Partnering with public health agencies to support the current governmental public health workforce**

# ACADEMIC PUBLIC HEALTH LEADERSHIP INSTITUTE

The 2021-2022 class of Academic Public Health Leadership Institute Scholars represents academic leaders from across the globe. The cohort-based program will address a variety of issues and challenges unique to institutions of higher education. The APHLI program combines virtual and in-person sessions.



Recognize and overcome the challenges of organizational change



Identify and manage leadership strengths and weaknesses for increased effectiveness



Develop clear action plans for leadership priorities and challenges and implement effective strategies



# ASPPH AWARDS

[Learn more](#)

**HARRISON C. SPENCER**



GRADUATE SCHOOL OF  
PUBLIC HEALTH & HEALTH POLICY

**WELCH-ROSE**



**ANTHONY FAUCI, MD**

NIH

**WELCH-ROSE**



**CHARLES S. MAHAN, MD**

SOUTH FLORIDA

**TEACHING**



**MICHAEL KRAMER, PHD**

EMORY

**PRACTICE**



**MELISSA (MOOSE) ALPERIN, EDD, MPH, MCHES**

EMORY

**RESEARCH**



**GRACE JOHN-STEWART, MD, PHD, MPH**

WASHINGTON



**STUDENT SERVICES**



**VINCENT JAMES, MBA, MA, MS**

HARVARD

**EARLY CAREER TEACHING**



**JONATHAN GARCIA, PHD**

OREGON



**EARLY CAREER RESEARCH**



**JOSEPH LEWNARD, PHD**

BERKELEY

**UNDERGRADUATE EDUCATION**



**GLORIA T. DIFULVIO, PHD, MPH, MED**

UMASS-AMHERST





# **ASPPH AT A GLANCE**

# 135

## ASPPH MEMBERS



67 Graduate Public Health Programs

63 Graduate Schools of Public Health

5 Associate Programs

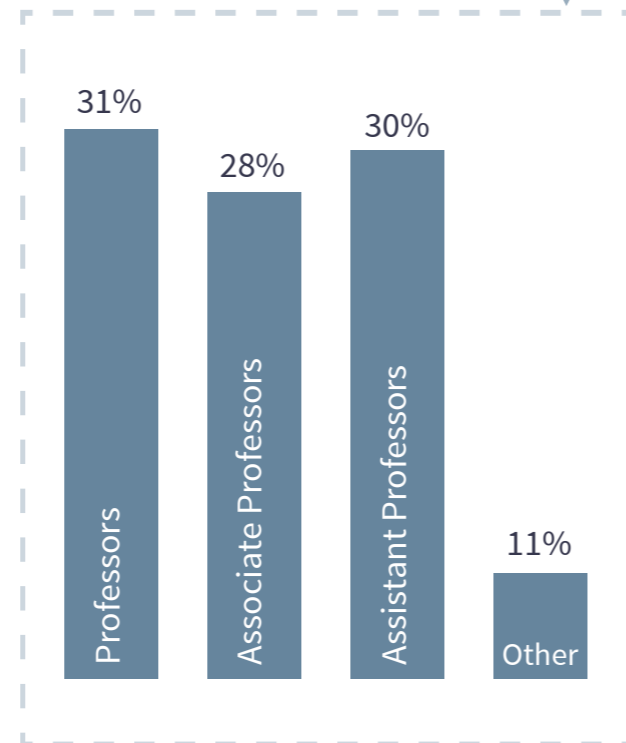
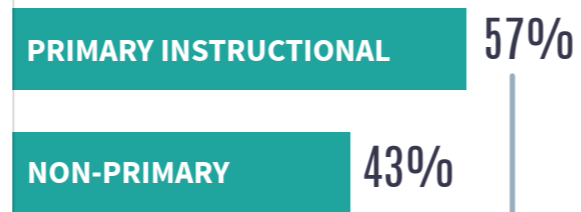
# 6

## COUNTRIES

Lebanon  
China  
Grenada  
Mexico  
Taiwan  
United States

# 10,816

## FACULTY FALL TERM 2020



# 103,251

## APPLICATIONS 2019-2020 ACADEMIC YEAR

# 56%

Of graduate-level applications were submitted to MPH degree programs.

## TOP 5 MPH AREAS OF STUDY

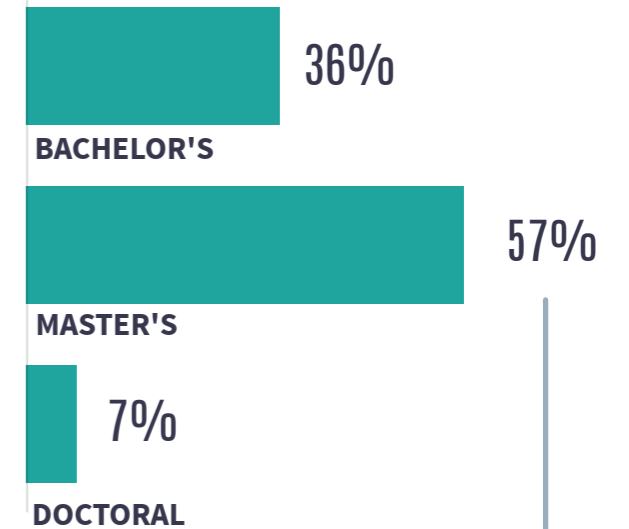
- EPIDEMIOLOGY
- GENERAL PUBLIC HEALTH
- HEALTH EDUCATION/BEHAVIORAL SCIENCES
- HEALTH POLICY AND MANAGEMENT
- OTHER



28% of MPH applications to General Public Health programs were for online programs.

# 24,311

## GRADUATES 2019-2020 ACADEMIC YEAR



# 71%

Of master's graduates completed an MPH degree.

# THIS IS PUBLIC HEALTH GRADUATE SCHOOL FAIRS

Participating ASPPH members receive a complete list of contact information for all registrants of each virtual and in-person fair.

[Explore TIPH](#)

14

TIPH FAIRS

5,300+

REGISTRANTS

83

MEMBER INSTITUTIONS PARTICIPATED

# PUBLIC HEALTH JOBS

[Explore PUBLICHEALTHJOBS.org](#)

2,800+

JOBS POSTED

1,700+

EMPLOYERS USED

# FELLOWS

125

APPLICATIONS

11

FELLOWS PLACED FOR FIRST YEAR

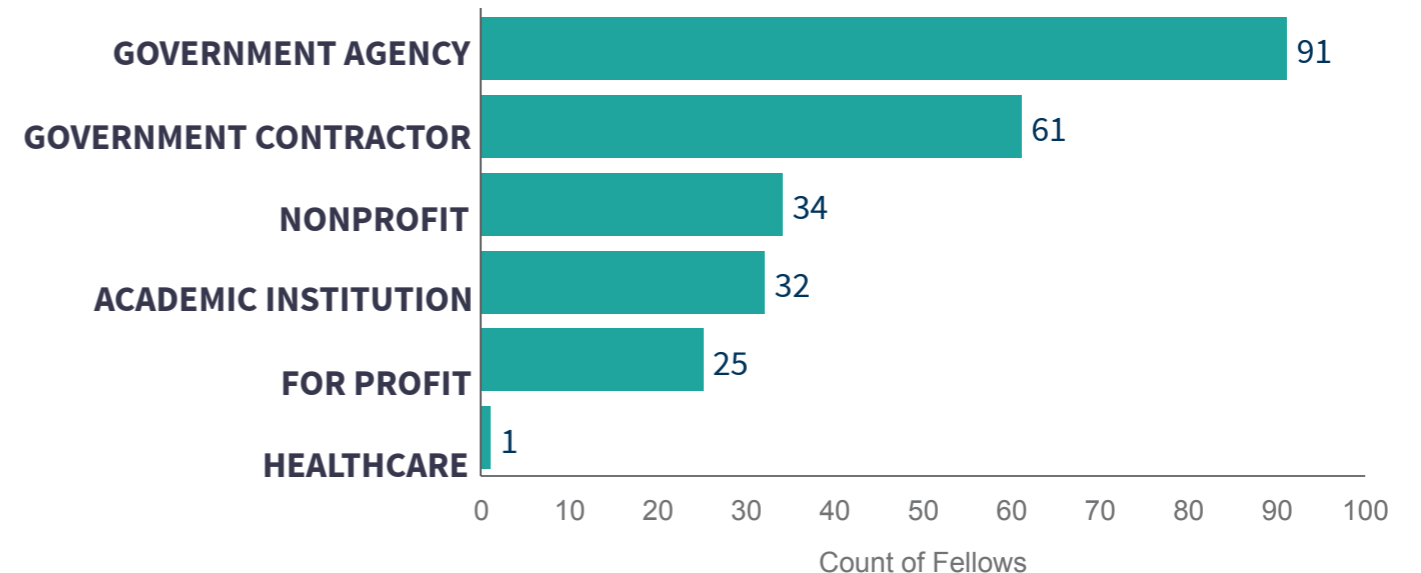
13

FELLOWS RENEWED FOR ADDITIONAL YEAR

## PROGRAMS

- ASPPH/CDC Public Health Fellowship
- ASPPH/EPA Environmental Health Fellowship
- ASPPH/NHTSA Public Health Fellowship

## POST-FELLOWSHIP EMPLOYMENT OUTCOMES 2001-2020



**117**

ASPPH MEMBERS  
ACCEPTED  
APPLICATIONS

**6**

NEW SOPHAS  
MEMBERS IN 2020

**81,450**

APPLICATIONS  
**24%** ↑  
INCREASE FROM  
AUGUST 2020 - AUGUST 2021

**30,987**

APPLICANTS  
**14%** ↑  
INCREASE FROM  
AUGUST 2020 - AUGUST 2021



[> Jump to SOPHAS](#)



# POLICY & ADVOCACY



## GOALS OF THE ASPPH ADVOCACY PROGRAM

- **Affect regulatory, legislative, and other policy issues that directly impact schools, programs, faculty, and students.**
- **Give voice to the concerns of the academic public health community on policy issues that violate or affirm the values of our leaders, faculty, and students.**
- **Actively engage in coalition activities that advance our advocacy goals.**
- **Serve as a vital information resource on policy matters so that member primary representatives and other faculty leaders are the most informed policy leaders on their campus and can share that knowledge with others, as they see fit.**



**Activities report**



An article featured in [@washingtonpost](#) examined the racial divide in vaccinations, highlighting "the disproportionate pain of death and disease in communities of color. Coronavirus immunizations are the latest iteration of the pandemic's unequal burden." [BIT.LY/3Al7UdQ](https://bit.ly/3Al7UdQ) [#ASPPHAdvocates](#)



Public health officials worry that increased funding given to state and local public health departments in response to the pandemic could soon recede, leaving the nation where it was before #COVID19: "unprepared for a health crisis." Read the full article: [BIT.LY/2RYTHBo](https://bit.ly/2RYTHBo) [#ASPPHAdvocates](#)

# EMPOWERING DATA-INFORMED DECISIONS

Public Health Institutional Research and Effectiveness (PHIRE) provides members with essential academic public health data, report-builders and dashboards, and expert advice to drive members' decision-making, planning, and strategizing. PHIRE offers support to members through elearning and tailored trainings as they establish and build institutional research capacity at their school or program of public health

[Learn more](#)



## ASPPH Annual Reporting

A record 122 ASPPH members participated in 2020 ASPPH Annual Reporting. By providing data on admissions, students, graduates and graduate outcomes, faculty, salary, and financials, members have data to inform many of their academic decisions.

**47** YEARS OF  
ASPPH ANNUAL  
REPORTING  
DATA

**16**  
YEARS OF  
SOPHAS DATA

### SOPHAS

2021 marks 16 years of SOPHAS data that are available to ASPPH members, including access to current admissions cycle data, which allows members to make timely decisions about student recruitment and enrollment.

**14**  
YEARS OF  
DATA

### Certified in Public Health

ASPPH members monitor the performance of their students and alumni, making adjustments to curriculum and instruction to ensure that they are prepared to work in public health.

Public health education research conducted by ASPPH and its members serves as a catalyst to answer key research questions on public health education, including exploring the pipeline to public health workforce.

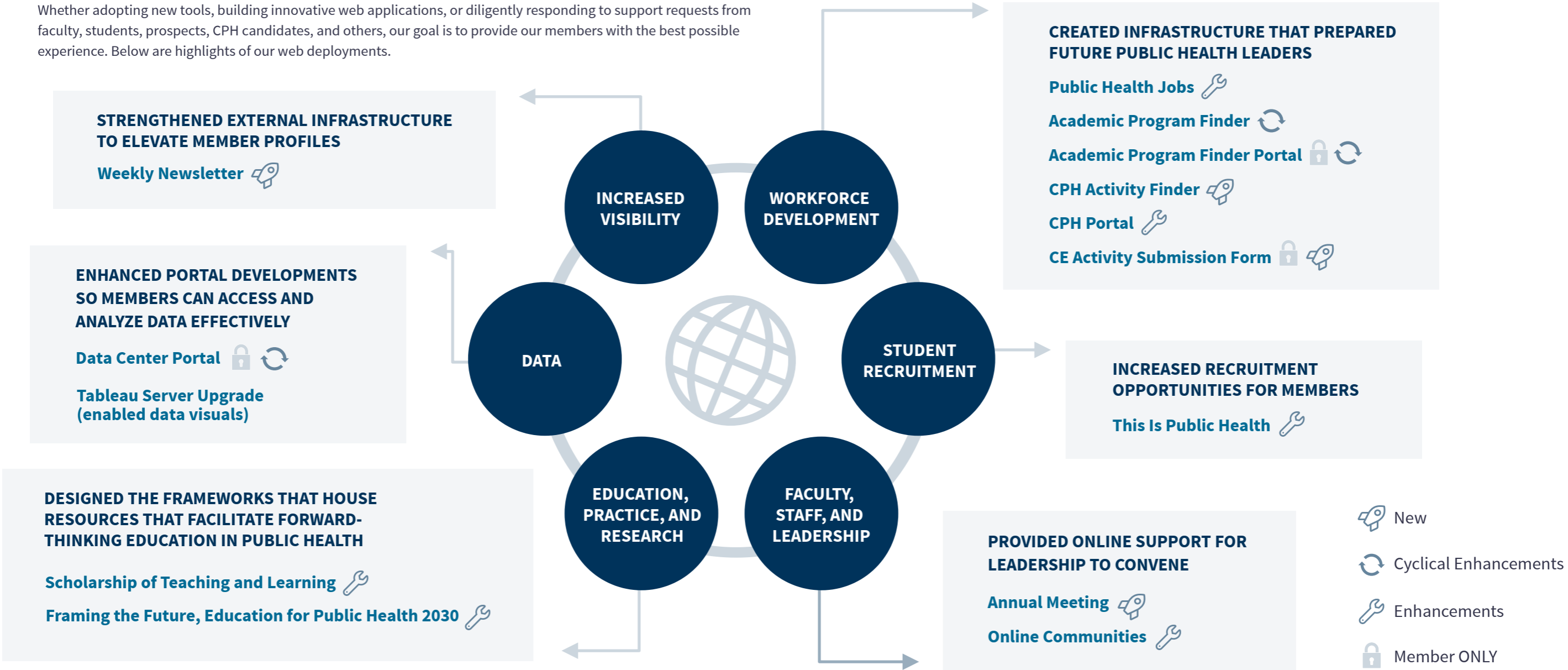
The results are disseminated through journal articles, reports, webinars, and conference presentations.

- **FIRST-DESTINATION OUTCOMES FOR 2015–2018 PUBLIC HEALTH GRADUATES: FOCUS ON EMPLOYMENT**
- **EMPLOYMENT OUTCOMES OF PUBLIC HEALTH GRADUATES: 4 YEARS OF NATIONAL DATA COLLECTION**
- **EMPLOYMENT OUTCOMES AND JOB SATISFACTION OF INTERNATIONAL PUBLIC HEALTH PROFESSIONALS: WHAT LESSONS FOR PUBLIC HEALTH AND COVID-19 PANDEMIC PREPAREDNESS? EMPLOYMENT OUTCOMES OF PUBLIC HEALTH GRADUATES\***
- **PUBLIC HEALTH ENROLLMENT TRENDS STUDY\***
- **DATA AND RESEARCH FOR DECISION-MAKING: WHAT WE KNOW AND WHAT WE NEED\***

\* [email data@aspph.org](mailto:data@aspph.org) to receive a copy of report

# DELIVERING HUMAN-CENTRIC SERVICES AND PRODUCTS

At ASPPH, we believe that technology is fundamentally human and there are enormous advantages of digitization. Whether adopting new tools, building innovative web applications, or diligently responding to support requests from faculty, students, prospects, CPH candidates, and others, our goal is to provide our members with the best possible experience. Below are highlights of our web deployments.





**LYNN GOLDMAN, MD, MS, MPH**  
CHAIR, ASPPH BOARD

GEORGE WASHINGTON UNIVERSITY  
MILKEN INSTITUTE SCHOOL OF PUBLIC HEALTH



**LAURA MAGAÑA, PHD, MS**  
PRESIDENT & CEO

ASSOCIATION OF SCHOOLS AND  
PROGRAMS OF PUBLIC HEALTH



**AYMAN EL-MOHANDES, MD, MPH, MBBCH**  
CHAIR ELECT

CUNY GRADUATE SCHOOL OF PUBLIC  
HEALTH AND HEALTH POLICY



**SANDRO GALEA, MD, MPH, DRPH**  
IMMEDIATE PAST CHAIR

BOSTON UNIVERSITY SCHOOL OF  
PUBLIC HEALTH



**DEAN SMITH, PHD**  
SECRETARY / TREASURER

LOUISIANA STATE UNIVERSITY HEALTH  
SCIENCES CENTER SCHOOL OF PUBLIC HEALTH

AT LARGE



**LISA BENZ SCOTT**  
PHD

STONY BROOK  
UNIVERSITY PROGRAM  
IN PUBLIC HEALTH



**JAMES W. CURRAN**  
MD, MPH

EMORY UNIVERSITY  
ROLLINS SCHOOL OF  
PUBLIC HEALTH



**MARTIN FORDE**  
SCD

ST. GEORGE'S UNIVERSITY  
DEPARTMENT OF PUBLIC  
HEALTH AND PREVENTIVE  
MEDICINE



**WAYNE H. GILES**  
MD, MS

UNIVERSITY OF ILLINOIS AT  
CHICAGO SCHOOL OF  
PUBLIC HEALTH



**HILARY GODWIN**  
PHD

UNIVERSITY OF WASHINGTON  
SCHOOL OF PUBLIC HEALTH



**PERRY N. HALKITIS**  
PHD, MS, MPH

RUTGERS SCHOOL  
OF PUBLIC HEALTH



**THOMAS LAVEIST**  
PHD

TULANE UNIVERSITY SCHOOL  
OF PUBLIC HEALTH AND  
TROPICAL MEDICINE



**BORIS D. LUSHNIAK**  
MD, MPH, RADM, USPHS

UNIVERSITY OF MARYLAND  
SCHOOL OF PUBLIC HEALTH



**MARY MCKERNAN MCKAY**  
PHD, MSW

WASHINGTON UNIVERSITY IN ST.  
LOUIS - BROWN SCHOOL PUBLIC  
HEALTH PROGRAMS



**EDITH PARKER**  
DRPH, MPH

UNIVERSITY OF IOWA  
COLLEGE OF PUBLIC HEALTH



**NANNETTE C. TURNER**  
PHD, MPH

MERCER UNIVERSITY MASTER OF  
PUBLIC HEALTH PROGRAM



**ROBERT M. WEILER**  
PHD, MPH

GEORGE MASON UNIVERSITY  
MPH PROGRAM

## GOVERNANCE

Dedicated to a shared commitment of academic excellence, the ASPPH Board of Directors incorporates the core values of ASPPH to advocate for the health of local, national, and global populations through education, research, and practice.



# CPH Certified in Public Health

by National Board of Public Health Examiners

[NBPHE.org](https://www.nbphe.org)

**11,000+**  
CPH EXAMINEES

**1,000+**  
CPH BOOK CLUB MEMBERS

**26,000+**  
MEMBERS

**124**  
CHAPTERS



## Delta Omega Honorary Society in Public Health

[DELTAOMEGA.org](https://www.deltomega.org)

## PUBLIC HEALTH REPORTS

The official journal of the Office of the US Surgeon General and the US Public Health Service.

[PUBLICHEALTHREPORTS.org](https://www.publichealthreports.org)

**573,787+**  
FULL TEXT DOWNLOADS



# 80 YEARS OF FUN FACTS

fun fact  
**FIRST FRIDAY LETTER**  
**1978**




1941-2021  
ASPPH

fun fact  
**ASPH PURCHASES ITS FIRST COMPUTER**  
**1983**



1941-2021  
ASPPH

fun fact  
**ASPH CREATES PUBLIC HEALTH JOBS**  
**2003**



1941-2021  
ASPPH

fun fact  
**ASPPH LOGO EVOLUTION**



1941-2021  
ASPPH

fun fact  
**IN 2015, ASPPH REACHES AND SURPASSES 100 MEMBERS**



1941-2021  
ASPPH

fun fact  
**SOPHAS LAUNCHED WITH MEMBERS**  
**2006**



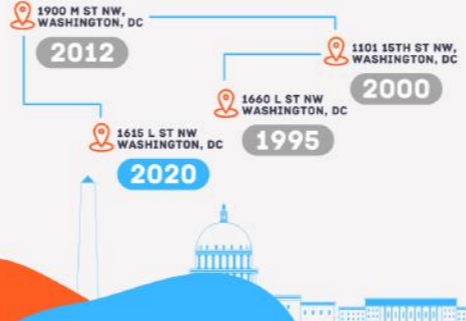
1941-2021  
ASPPH

fun fact  
**ASPH JOINS SOCIAL MEDIA**  
**2010**



1941-2021  
ASPPH

fun fact  
**ASPH OFFICES OVER THE YEARS!**



1941-2021  
ASPPH

fun fact  
**FIRST WEDNESDAY BRIEF**  
**2013**



1941-2021  
ASPPH

fun fact  
**THIS IS PUBLIC HEALTH AMBASSADOR PROGRAM LAUNCHED**  
**2017**



1941-2021  
ASPPH

# MEMBERSHIP

## MEMBERS

- A.T. Still University College of Graduate Health Studies
- American University of Beirut - Faculty of Health Sciences, Graduate Public Health Program
- Arcadia University College of Health Sciences MPH Program
- Baylor University Public Health Program
- Boston University School of Public Health
- Brown University School of Public Health
- Campbell University Master of Science in Public Health Program
- Case Western Reserve University MPH Program
- Chamberlain University MPH Program
- Charles R. Drew University of Medicine and Science MPH Program in Urban Public Health
- Claremont Graduate University Master of Public Health Program
- Colorado School of Public Health: University of Colorado | Colorado State University | University of Northern Colorado
- Columbia University Mailman School of Public Health
- Consortium of Eastern Ohio Master of Public Health Program
- Cornell University MPH Program
- Creighton University MPH Program
- CUNY Graduate School of Public Health and Health Policy
- Dartmouth - Geisel School of Medicine MPH Program
- DePaul University Master of Public Health Program
- Des Moines University Department of Public Health
- Drexel University Dornsife School of Public Health
- East Tennessee State University College of Public Health
- Emory University Rollins School of Public Health
- Florida A&M University Public Health Program
- Florida International University Robert Stempel College of Public Health and Social Work
- George Mason University Graduate Programs in Public Health
- George Washington University Milken Institute School of Public Health
- Georgia Southern University Jiann-Ping Hsu College of Public Health
- Georgia State University School of Public Health
- Harvard T.H. Chan School of Public Health
- Hofstra University MPH Program
- Icahn School of Medicine at Mount Sinai, Graduate Program in Public Health
- Indiana University Richard M. Fairbanks School of Public Health - Indianapolis
- Indiana University School of Public Health - Bloomington
- Johns Hopkins Bloomberg School of Public Health
- Kent State University College of Public Health
- Loma Linda University School of Public Health
- Long Island University, Brooklyn Master of Public Health Program
- Louisiana State University Health Sciences Center School of Public Health
- Loyola University Chicago MPH Program
- Meharry Medical College Division of Public Health Practice
- Mercer University Department of Public Health
- National Institute of Public Health of Mexico (Instituto Nacional de Salud Publica)
- National Taiwan University College of Public Health
- New York Medical College, School of Health Sciences and Practice, and Institute of Public Health
- New York University School of Global Public Health
- North Dakota State University Department of Public Health
- Northeastern University MPH Program
- Northwestern University Feinberg School of Medicine Program in Public Health
- Ohio State University College of Public Health
- Oregon Health & Science University/Portland State University School of Public Health
- Oregon State University College of Public Health and Human Sciences
- Pennsylvania State University Public Health Program
- Purdue University Department of Public Health
- Rutgers School of Public Health
- Saint Louis University College for Public Health and Social Justice
- San Diego State University School of Public Health
- Southern Connecticut State University Public Health Program
- St. Catherine University Public Health Program
- St. George's University Department of Public Health and Preventive Medicine
- Stony Brook University Program in Public Health
- SUNY Downstate School of Public Health
- Temple University College of Public Health
- Texas A&M School of Public Health
- Texas Tech University Health Sciences Center MPH Program
- The University of Texas Health Science Center at Houston School of Public Health
- Thomas Jefferson University, College of Population Health - MPH Program
- Touro University - California MPH Program
- Tufts University School of Medicine, Public Health Program
- Tulane University School of Public Health and Tropical Medicine
- UCLA Jonathan and Karin Fielding School of Public Health
- Uniformed Services University of the Health Sciences Public Health Program
- University at Albany School of Public Health
- University at Buffalo School of Public Health and Health Professions
- University of Alabama at Birmingham School of Public Health
- University of Arizona Mel and Enid Zuckerman College of Public Health
- University of Arkansas for Medical Sciences Fay W. Boozman College of Public Health
- University of California, Berkeley School of Public Health
- University of California, Davis MPH Program
- University of California, Irvine - Public Health, Epidemiology, Environmental Health Sciences
- University of Cincinnati College of Medicine MPH Program
- University of Florida College of Public Health and Health Professions
- University of Georgia College of Public Health
- University of Hawai'i at Mānoa Public Health Program
- University of Illinois at Chicago School of Public Health
- University of Illinois at Urbana-Champaign College of Applied Health Sciences
- University of Iowa College of Public Health
- University of Kansas School of Medicine KU - MPH Program
- University of Kentucky College of Public Health
- University of Louisville School of Public Health and Information Sciences
- University of Maryland School of Medicine Public Health Programs
- University of Maryland School of Public Health
- University of Massachusetts Amherst School of Public Health and Health Sciences
- University of Memphis School of Public Health
- University of Miami Department of Public Health Sciences
- University of Michigan School of Public Health
- University of Minnesota School of Public Health
- University of Nebraska Medical Center College of Public Health
- University of Nevada, Las Vegas School of Public Health
- University of Nevada, Reno School of Public Health
- University of New England Graduate Program in Public Health
- University of New Mexico College of Population Health Master of Public Health
- University of North Carolina at Charlotte Public Health Programs
- University of North Carolina Gillings School of Global Public Health
- University of North Dakota Master of Public Health Program
- University of North Texas Health Science Center School of Public Health
- University of Oklahoma Health Sciences Center Hudson College of Public Health
- University of Pennsylvania Master of Public Health Program
- University of Pittsburgh Graduate School of Public Health
- University of Puerto Rico Graduate School of Public Health
- University of Rochester Graduate Public Health Programs
- University of South Carolina Arnold School of Public Health
- University of South Florida College of Public Health
- University of Southern California Programs in Public Health
- University of Texas Medical Branch at Galveston Graduate Program in Public Health
- University of Toledo Master of Public Health Program
- University of Utah Public Health Program
- University of Vermont Larner College of Medicine MPH Program
- University of Virginia MPH Program
- University of Washington School of Public Health
- University of Wisconsin-Milwaukee Joseph J. Zilber School of Public Health
- Upstate Medical University Public Health Program
- Vanderbilt University Institute for Medicine and Public Health
- Virginia Commonwealth University Graduate Public Health Programs
- Virginia Tech Public Health Program
- Walden University Master of Public Health Program
- Washington University in St. Louis - Brown School Public Health Programs
- West Virginia University School of Public Health
- Wright State University MPH Program
- Yale School of Public Health

## ASSOCIATE MEMBERS

- Michigan State University MPH Program
- New England Institute of Technology MPH Program
- St. Ambrose University, Master of Public Health Program
- University of Hong Kong MPH Program
- University of New Haven Public Health Program





# ENGAGE WITH ASPPH



ASPPH



ASPPHtweets



aspphorg



ASPPH

#ASPPHAdvocates #ASPPHEvents  
#ASPPHGoesGlobal #ASPPHAnnualMeeting  
#ThisIsPublicHealth



## SUBSCRIBE TO OUR NEWSLETTER

The Friday Letter is essential weekly reading for anyone interested in the latest news from schools and programs of public health and public health partners in the United States and around the globe. Join our mailing list to receive our free Friday email.



[Explore news](#)