

*ASPPH Presents Webinar Series*

***Student Services Spotlight:  
Supporting International Grad Students  
along the Journey from Prospective to  
Alumni***

Wednesday, September 13, 2017  
2:00 pm-3:00 pm Eastern

ASPPH.ORG

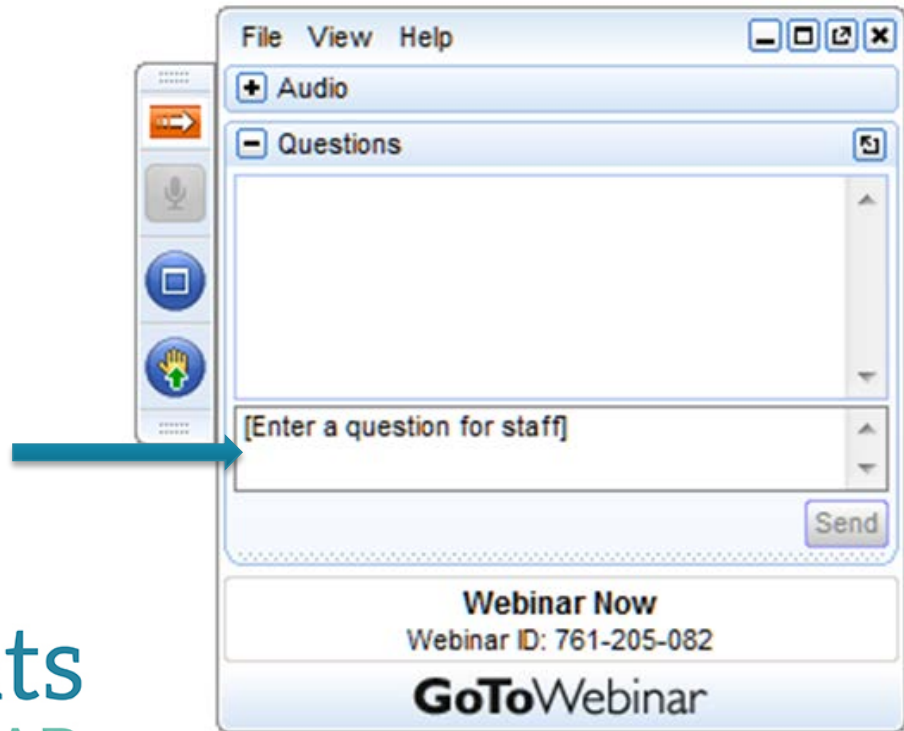
1900 M Street NW, Suite 710  
Washington, DC 20036  
Tel: (202) 296-1099

**ASPPH Presents**  
 **WEBINAR**

# Method for Submitting Questions

## Join the Conversation...

- You can ask questions in writing anytime during the webinar.
- Simply type them in the “Questions” field on the right side of your screen.



ASPPH Presents  
▶ WEBINAR

# Today's Presenters

---



**Hannah Nichol**  
Emory University



**Rick Huizinga**  
Emory University

# **Supporting international grad students in the journey from prospective to alumni**



**HANNAH NICOL**

ASSISTANT DIRECTOR, INTERNATIONAL STUDENT AFFAIRS & ESL

&

**RICK HUIZINGA**

PROGRAM COORDINATOR, EMORY OFFICE OF INTERNATIONAL STUDENT LIFE

# An Introduction to Rollins School of Public Health & Resources for International Students

Part 1 with Hannah



# A snapshot of our RSPH international community



200+ 'international' MPH students

40+ countries represented

15-20% of overall student population

# Class of 2018 Statistics

- 557 Entering students
- 40% Students of color
- 17% International students
- 29 countries and 44 states
- 76% Female enrollment
- 67% have previous work experience
- 33% directly from undergraduate institution
- Average age of 26
  - Age range: 21-57





# Admitted Student Portal

[https://www.sph.emory.edu/prospective\\_students/admitted\\_students/index.php](https://www.sph.emory.edu/prospective_students/admitted_students/index.php)

Admitted students can log in



# Pre-arrival Webinars: What is it like to be an international student at Rollins?

## Coming to America: Getting Ready to go



# Rollins International Student Orientation (RIO)

August 9-11



# Emory University



## Campus Resources:

- International Student & Scholar Services (ISSS)
- Office of LGBT Life
- CAPS (Counseling and Psychological Services)
- SAAC & Woodruff Recreation Centers
- DUC (Dobbs University Center)



# RSPH



## Resources for all RSPH students:

- Student Services Office
- Office of Career Development
- Prayer & Meditation Room
- Ablution Room
- Silent Study Room
- Student Kitchen
- Rollins Cafe & Vending Machines
- Lockers & Locker Rooms



# Leadership and campus involvement opportunities for international students

- Rollins International Student Association (RISA)
- RSPH International Student Mentorship Program
- Global Peer Network (GPN)
- Rollins Student Government Association (RSGA)
- Rollins International Student Advisory Board (RISAB)
- OISL International Coffee Hour
- OISL Global Lounge



# English Language Support for Rollins Multilingual Learners

- 1. ESL classes**
- 2. Academic Writing Center (open to ALL Rollins students)**
- 3. Volunteer Peer Editors**
- 4. Conversation Practice Sessions (Spring)**
- 5. Writing Workshops**
- 6. Conversation Practice Sessions**

# ROLLINS EARN AND LEARN (REAL)

**The REAL Program partners with employers internal and external to Emory to provide paid, skills-based, and Public Health Competency-based work experiences for eligible full-time master's level public health graduate students.**

- Students are hired as Emory University employees
- Students work an average of 10 to 12 hours/week (maximum of 20)
- Students can be hired for fall and/or spring semesters only
- Students can work up to 208.33 hours/semester
- Students have the option of working remotely/virtually with supervisor/employer permission
- Students are paid at \$12/hour. Half of the student's hourly rate is paid by the REAL Program (\$6) and the other half (\$6) is paid by the partnering organization or department



# REAL (Rollins Earn and Learn)

More than 500 students employed by various agencies

\$2,000 per semester (\$4000 annually)

First year F-1 visa students can apply for a REAL award for the second year

<https://www.sph.emory.edu/rollins-life/community-engaged-learning/real/index.html>



# Connect



## **RSPH Class of 2019 Facebook page**

<https://www.facebook.com/groups/1257917014334629/>

## **RSPH International Students Facebook group**

<https://www.facebook.com/groups/1183657158358957/>

## **International Students at Emory**

<https://www.facebook.com/groups/738920329582552/>

## **RSPH International Students' Programs and Services**

<https://www.sph.emory.edu/rollins-life/resources/international-students/index.html>



For more information...

Rollins International Student Programs and Services:

<https://www.sph.emory.edu/rollins-life/resources/academic-writing-resources/index.html>

RSPH Academic Writing Resources:

<https://www.sph.emory.edu/rollins-life/resources/international-students/index.html>

QUESTIONS?





**MORE QUESTIONS?**

**[HANNAH.NICOL@EMORY.EDU](mailto:HANNAH.NICOL@EMORY.EDU)**

**404-727-2989**

त्वां धन्यं वदामि! Gracias! 谢谢!  
Obrigado! شكرا! Merci!  
Thank you! 고맙습니다!





# Peaches and Coconuts: Intercultural workshops for a global institution

Rick Huizinga



EMORY  
UNIVERSITY

Student Involvement,  
Leadership, and Transitions  
Campus Life



**Why?**

# Culture Matters!



&







## Culture Matters

Is a simple cultural difference affecting  
how we **JUDGE** one another?

OR

Is a simple cultural difference affecting  
how we **WORK** with one another?

OR

Is a simple cultural difference causing us  
to **WITHDRAW** from one another?



# Highlight #1: Cultural Dimensions

## One Example: Collectivist Cultures

- Self-Promotion (or lack thereof)
- Concepts of relationships
- Speaking up
- Saving Face





# Highlight #2: The Culture Map

Low Context

**Communicating**

High Context

Direct Feedback

**Evaluating**

Indirect Feedback

Egalitarian

**Leading**

Hierarchal

Consensual

**Deciding**

Top-Down

Task-based

**Trusting**

Relationship-based

Confrontational

**Disagreeing**

Avoid Confrontation

Linear Time

**Scheduling**

Flexible Time

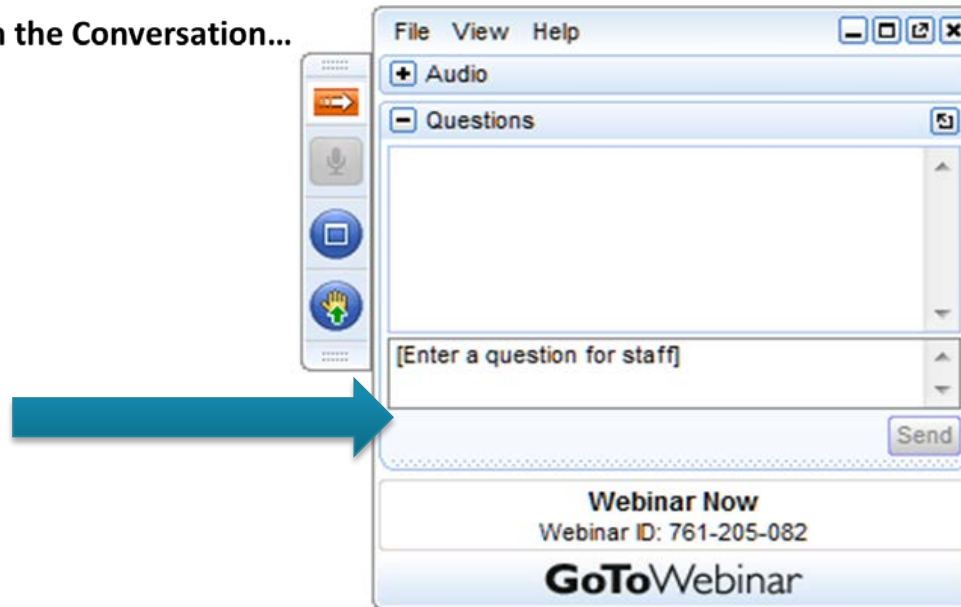
# Highlight #3: Cultural Intelligence



# Questions or Comments?

---

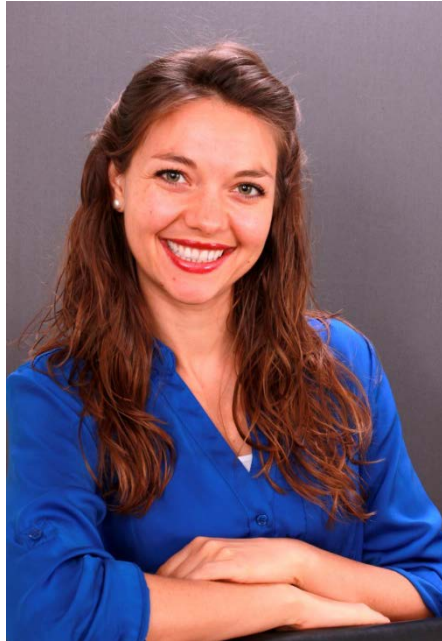
Join the Conversation...



# Thank you to Today's Presenters

---

Now taking questions.



**Hannah Nichol**  
Emory University



**Rick Huizinga**  
Emory University

# Thank You!

---

See the webinar event page on the ASPPH website for a link to the **archived webinar**:

<http://www.aspph.org/event/aspph-presents-student-services-spotlight-supporting-international-grad-students-along-the-journey-from-prospective-to-alumni//>

Contact: [webinars@aspph.org](mailto:webinars@aspph.org)

**CPHCE**  
*Credits*

## ASPPH Presents Integrating Advocacy into the Undergraduate Curriculum

Monday, September 18, 2017

For more information about and to register for upcoming webinars, visit the ASPPH Events page:

<http://www.aspph.org/events/category/webinar/>



---

Coming Attractions...

**UNDERGRADUATE**  
Public Health and Global Health Education  
..... SUMMIT .....  
MARCH 7, 2018 • ARLINGTON, VA

**Call for abstracts open**

Submissions due Sunday, October 22

<http://www.aspph.org/event/2018undergraduatepublichealthsummit/>

# Thank You!

---

See the webinar event page on the ASPPH website for a link to the **archived webinar**:

<http://www.aspph.org/event/aspph-presents-webinar-using-competencies-to-inform-undergraduate-program-design-and-incorporation-of-evaluation-activities/>

Contact: [webinars@aspph.org](mailto:webinars@aspph.org)

**CPHCE**  
*Credits*