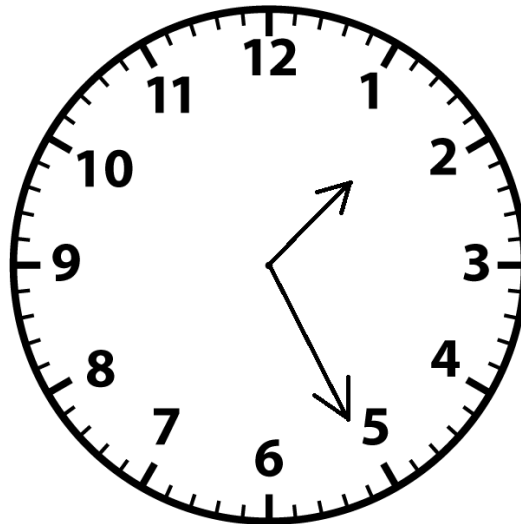


Accreditation Dialogues Round 4

While you wait......check out ASPPH's draft response to CEPH's round 4 criteria in the "Handouts" section

CEPH's draft criteria & data templates, are also available in the "Handouts" section



ASPPH Presents
 **WEBINAR**

Accreditation Dialogues, Round 4

Monday August 29, 2016
1:30 – 2:30 pm EASTERN

*Sponsored by the ASPPH Accreditation and
Credentialing Committee*

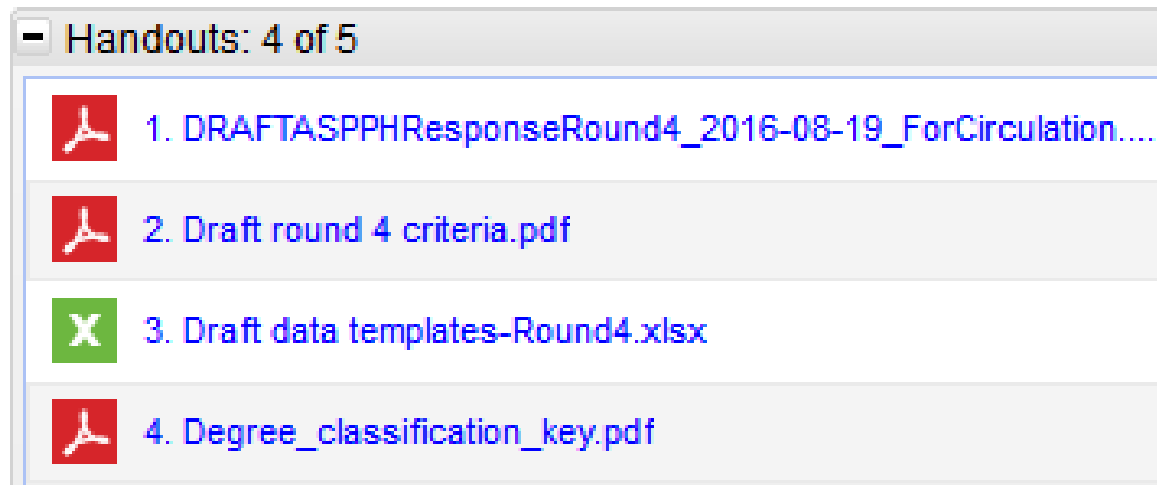
ASPPH.ORG

1900 M Street NW, Suite 710
Washington, DC 20036
Tel: (202) 296-1099
Fax: (202) 296-1252

ASPPH Presents
 WEBINAR

Access Handouts

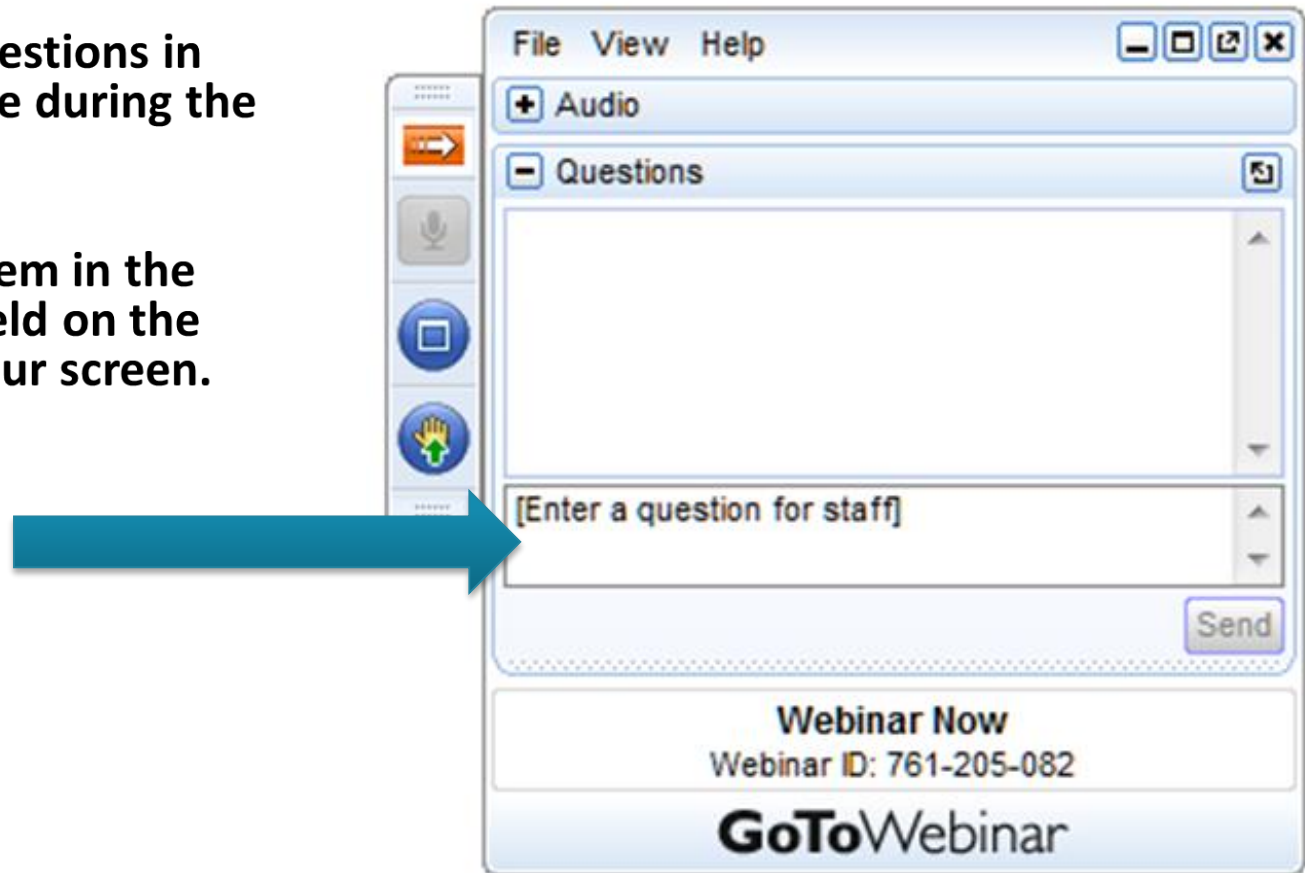
- ASPPH draft response to CEPH
- CEPH's DRAFT round 4 criteria
- CEPH's DRAFT data templates
- CEPH's Degree classification key



Method for Submitting Questions

Join the Conversation...

- You can ask questions in writing anytime during the webinar.
- Simply type them in the “Questions” field on the right side of your screen.



Webinar Moderator



Dean David C. Goff

Colorado School of Public Health:
University of Colorado | Colorado
State University | University of
Northern Colorado

Chair, ASPPH Accreditation and
Credentialing Committee

ASPPH-Member Councilors to CEPH



**Dean Donna
Petersen,
CEPH
President
(South
Florida)**



**Ms. Ruth
Gaare
Bernheim
(UVA)**



**Dean John
Finnegan
(Minnesota)**



**Dean Iman
Hakim
(Arizona)**

CEPH Representatives



Ms. Laura Rasar King

Executive Director
Council on Education for
Public Health



Ms. Mollie Mulvanity

Deputy Director
Council on Education for
Public Health

Review of ASPPH Work in Round 4



Dean David C. Goff

Colorado School of Public Health:
University of Colorado | Colorado
State University | University of
Northern Colorado

Chair, ASPPH Accreditation and
Credentialing Committee

ASPPH Review of Proposed Criteria



From: <https://www.pinterest.com/RoyalStandardGo/art-of-manliness/>

ASPPH Work Groups Staffed to Prepare Responses

1. Academic Affairs' Section (with Baccalaureate, MPH, DrPH, and Mapping subgroups)
2. Accreditation and Credentialing Committee
3. Behavioral and Social Science Forum
4. Biostats and Epi Forum
5. Career Services Forum
6. Data Committee
7. Diversity and Inclusion Committee
8. DrPH Council (jointly with the Acad Affairs' Section DrPH subgroup)
9. Environmental Health Forum
10. Faculty Affairs Leads
11. Finance and Administration Section
12. Health Policy and Management Forum
13. Learning Futures Forum
14. Joint/Dual Degrees Group (inclusive of reps of the Population Health across All Professions expert panel of the FTF Task Force)
15. MPH Council (jointly with the Acad Affairs' Section MPH subgroup)
16. Practice Section
17. Research Section
18. Student Services Forum

Criteria in Round 4

	Introduction
A	Organization & Decision Making
B	Mission & Evaluation
C	Resources
D	Curriculum
E	Faculty
F	Community Engagement
G	Diversity
H	Student Services

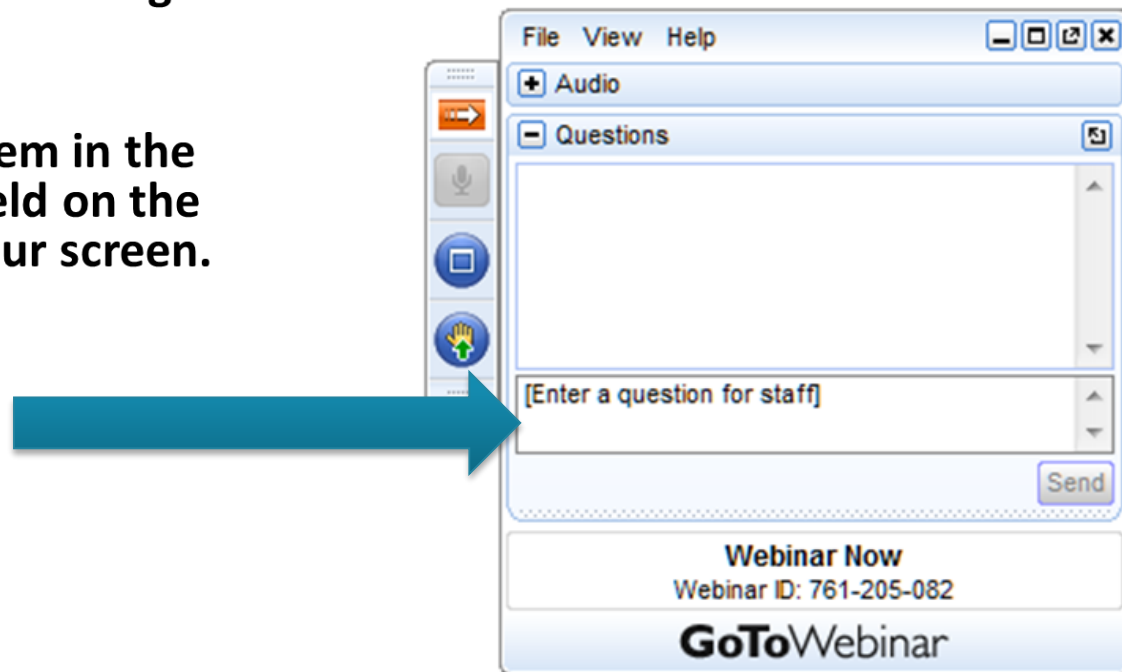
Your Response is Critical!

- All are encouraged to comment *directly* to CEPH by emailing Mollie at mmulvanity@ceph.org or to pose questions to Mollie or Laura (lking@ceph.org) as well as through this ASPPH process
- The ASPPH comment submission process should not be considered a substitute for institutional or individual means of commenting
-
- ASPPH-member comments should go to Liz Weist (eweist@aspiph.org or 202/296-1099 x. 129)

Method for Submitting Questions

Join the Conversation...

- You can ask questions in writing anytime during the webinar.
- Simply type them in the “Questions” field on the right side of your screen.



Onto *Your* Questions and Comments

In the ASPPH-recommended changes:

“‘Concentration’ refers to any area of study that the school or program advertises as available to students, via its catalog and/or website. Tracks or foci within concentrations are not considered separate ‘concentrations.’ For example, an MPH in epidemiology is a concentration. An MPH in epidemiology with focus areas in chronic disease and infectious disease would be two one concentrations, epidemiology. (chronic epidemiology and infectious epidemiology).”

Would you say “concentration” is synonymous “specialization” in the recommendation?

Onto *Your* Questions and Comments

In light of CEPH's *current* data template 1.2.C.

“Outcome Measures:”

- Are we to compile data from the new data templates into B2-1? (E4-1, H4-1, C3-1, B3-1, B4-1, etc.)
- B3-1: Confirm this didn't change; still based on academic years and matriculation-to-graduation cycle?
- B3-2: We've been using academic years instead of one year for 20xx and the previous year for 20yy. So, we report the number of students in each category for the academic year. Is that ok?
- B4-1: Confirm this didn't change; still based on academic year, and allow one full year to pass for each graduating cohort?

Onto *Your* Questions and Comments

Template B3-1: If a student enrolls in a program, but never shows up for any classes, are they still counted in the matriculating cohort?

I did not see a new template for Research. Will the SPH be able to include research from faculty who are not counted as “primary or other” (are not involved in teaching SPH courses)?

Reasons to include it follow:

- Research is often multidisciplinary and interprofessional
- Indirects and faculty salary support contribute to the SPH resources
- Provides research opportunities for SPH students, even if the PI is not teaching a class.
- Excluding some faculty does not present our SPH’s true research portfolio.

It is rather cumbersome and time-consuming to request the SPH research portfolio data from an administrator and then delete all the info for non-teaching faculty.

Your Reactions are Sought

C2-B. Faculty Resources

“Employed full-time as faculty members appointed in the SPH. For the purposes of accreditation, faculty members appointed in the SPH will be considered employed full-time **if they are employed by the institution that houses the unit of accreditation** engaged in SPH faculty activities with at least 0.75 FTE effort for schools using 12-month faculty contracts, an effort level comparable to full-time effort in schools using 9-month faculty contracts. The school uses the university’s definitions of 'faculty!...'”

Your Reactions are Sought

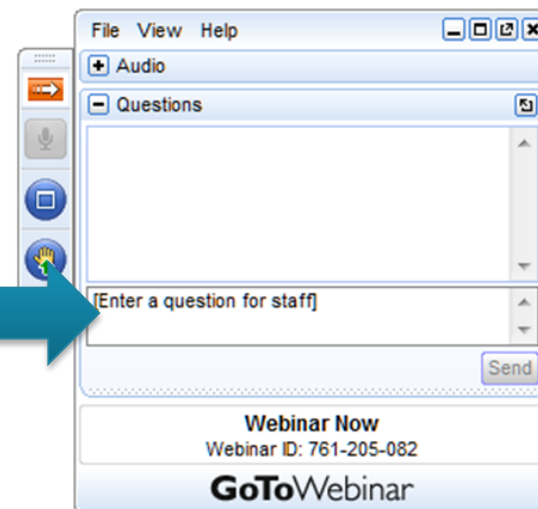
C2-B. Faculty Resources

“Spend a majority of time/effort (.50 FTE or greater based on a 12-month year) on activities associated with the School or Program, including instruction. Research and service effort should also be included in the FTE allocated to the School or Program if the research or service projects impact the School or Program and its students. The School or Program defines FTE allocations consistently and transparently and can clearly account for all time, effort and instructional or other responsibilities spent on activities outside the unit of accreditation.”

Taking More Questions from the Question Box

Join the Conversation...

- You can ask questions in writing anytime during the webinar.
- Simply type them in the “Questions” field on the right side of your screen.



Wrapping Up



Dean David C. Goff

Colorado School of Public Health:
University of Colorado | Colorado
State University | University of
Northern Colorado

Chair, ASPPH Accreditation and
Credentialing Committee

Timetable to the Finish Line

Activity	Dates <i>(subject to change)</i>
ASPPH Member Review of Draft Letter to CEPH	August 19 – September 2
Accreditation Committee-sponsored Round 4 Webinar #1	√ August 25 (10-11 am EASTERN)
Accreditation Committee-sponsored Round 4 Webinar #2	√ August 29 (1:30-2:30 pm EASTERN)
Response due to CEPH	Sept. 7, 2016

Concluding Remarks

- We will carefully review the discussions which took place during this dialogue
- Continue sending your institutional and individual comments to ASPPH (send to eweist@aspvh.org)
- Stay tuned for an archived version of the webinar posted on the webinar event page on the ASPPH website (<http://www.aspph.org/event/aspvh-presents-round-4-accreditation-dialogues/>)

Accreditation in ASPPH's *Online Community*

Who: Member faculty, staff, students, and alumni

How: Upon request via email to Liz Weist eweist@aspiph.org



ASPPIH Online Community

Coming Attractions...

ASPPH Presents WEBINAR

**CDC's Public Health Associate Program (PHAP) Program
and BEST FIT Candidate Model Overview**

Thursday September 29, from 2-3:00 p.m. Eastern

For more information about and to register for upcoming webinars, visit the ASPPH
Events page:

<http://www.aspph.org/events/category/webinar/>

More Coming Attractions...



2017 ASPPH
ANNUAL MEETING
MARCH 15-17 • ARLINGTON, VA

UNDERGRADUATE
Public Health and Global Health Education
..... SUMMIT
MARCH 15, 2017 • ARLINGTON, VA