



2016 ANNUAL REPORT



ASPPH ASSOCIATION OF
SCHOOLS & PROGRAMS
OF PUBLIC HEALTH

2016 BOARD OF DIRECTORS

Gary E. Raskob, PhD

Chair

University of Oklahoma Health Sciences Center,
College of Public Health

Donna J. Petersen, ScD, MHS, CPH

Chair-Elect

University of South Florida, College of Public Health

Lynn R. Goldman, MD, MS, MPH

Academic Public Health Practice Committee, Chair

George Washington University, Milken Institute
School of Public Health

David C. Goff, Jr, MD, PhD

Accreditation and Credentialing Committee, Chair

(Outgoing November 18, 2016)

Colorado School of Public Health: University of Colorado |
Colorado State University | University of Northern Colorado,
School of Public Health

Craig Blakely, PhD, MPH

Data Advisory Committee, Chair

University of Louisville, School of Public Health and
Information Sciences

Cheryl Healton, DrPH

Diversity and Inclusion Committee, Chair

New York University, Global Institute of Public Health

Randy Wykoff, MD, MPH & TM

Education Committee, Chair

East Tennessee State University, College of Public Health

James W. Curran, MD, MPH

Global Health Committee, Chair

Emory University, Rollins School of Public Health

Howard Frumkin, MD, DrPH, MPH, FACP

Legislative Committee, Chair (Outgoing September 23, 2016)

University of Washington, School of Public Health

Michael J. Klag, MD, MPH

Legislative Committee, Chair (Incoming September 26, 2016)

Johns Hopkins University, Bloomberg School of Public Health

John R. Finnegan, Jr, PhD

Immediate Past Chair, and Board Governance Committee, Chair

University of Minnesota, School of Public Health

Marjorie Aelion, PhD, SMCE

Secretary/Treasurer

University of Massachusetts-Amherst, School of Public
Health and Health Sciences

Martin Philbert, PhD

Research Committee Chair

University of Michigan, School of Public Health

Susan J. Curry, PhD

Liaison for Communications

University of Iowa, College of Public Health

Kue Young, MD, MSc, FRCPC, DPhil

International Liaison

University of Alberta, School of Public Health

Cynthia Harris, PhD, DABT

Student Services Liaison

Florida A&M University, Public Health Program

Robert Dittus, MD, MPH

At Large

Vanderbilt University, Institute for Medicine and Public Health

Linda P. Fried, MD, MPH

At Large (Incoming March 23, 2016)

Columbia University Mailman School of Public Health

Edward Lawlor, PhD

At Large (Outgoing June 30, 2016)

Washington University in St. Louis, Brown
School Public Health Programs

Oladele Ogunseitan, PhD, MPH

At Large

University of California, Irvine, Program in Public Health

Ayman El-Mohandes, MBBCh, MD, MPH

At Large

CUNY School of Public Health

ASPPH SENIOR LEADERSHIP

Allison J. Foster, MBA, CAE

Acting President and CEO

Rita M. Kelliher, MSPH

Senior Director of Education, Practice, and Data

Anthony J. (Tony) Mazzaschi

Senior Director of Policy and Research

Eduardo A. Ruiz

Senior Director of Information Technology

Letter from Chair



I am honored to have been able to serve as chair of the ASPPH board of directors over the last two years. This has been a transformative period for ASPPH, which has settled into its new identity as an association for public health education. Together,

we have navigated a complex legislative environment, vigorously engaged undergraduate public health education, and facilitated the release of new CEPH criteria which will allow for more flexibility in the education of the next generation of public health professionals.

My most distinct pleasure has been the opportunity to work closely with colleague deans and program directors who have consistently been collegial in their willingness to work together for the good of the organization and inspirational in their passion for our common cause. Thank you to all of you for your collegial support and for all that you do for ASPPH and for public health.

I am grateful for the opportunity to have worked with Harrison Spencer who consistently demonstrated deep compassion, wisdom, fairness, and unwavering commitment to the core values of public health. Through his ability to create a culture of excellence and member service, he left the association on a solid foundation to continue its work in advancing excellence in public health education, research, and service.

In March, I will turn the chair of the ASPPH board of directors to the very capable hands of Donna Petersen, dean of the University of South Florida College of Public Health. I know she will open a new chapter for ASPPH and I look forward to a bright future.

Thank you. It has been an honor and highlight of my professional career to serve as your Board Chair.

With best wishes,



Gary E. Raskob, PhD
Chair

Letter from Acting President

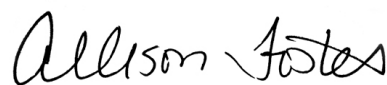


2016 will be remembered as one of great loss but also one of great hope. Harrison Spencer was an inspiration to members, staff, and friends of ASPPH. His vision and passion for ASPPH has had a lasting impact and guides us in all we do. Since his

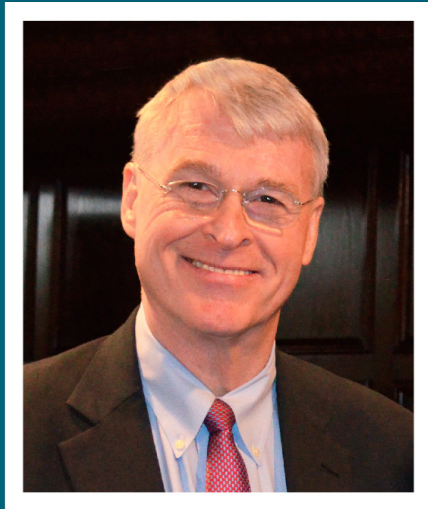
passing, we have focused on projects that were of particular importance to him. He would be proud of how our members and staff have shown up not only for each other, but for the Association and academic public health by carrying out the work of ASPPH.

As Harrison often said, ASPPH works best when its members engage thoughtfully. 2016 was an example of how well this philosophy can work. Public health education is changing at an unprecedented pace. There has been tremendous growth in graduate and undergraduate public health education, with a common mission - to seek opportunities to innovate and evolve to meet the needs of the public health workforce. We have also seen a new trend, as public health graduates increasingly find employment in non-traditional public health settings. ASPPH has fostered a meaningful community for our members to address these changes.

This is a wonderful time for a new leader to take the helm at ASPPH. While we have ambitious plans and many challenges ahead of us, we are primed to move public health education forward.



Allison J. Foster, MBA, CAE
Acting President and CEO



Harrison C. Spencer

MD, MPH, DTM&H, CPH

(1944-2016)

“Public health is filled with heroes, both well known and unknown. They are visible on the national or international stage or they work quietly in communities with families and individuals. When they do their job, they often become invisible.”

Dr. Harrison Spencer, our boss, colleague, and friend, passed away on August 10. Harrison was a humble man who made a significant impact on the lives of countless people. His death is a tremendous loss to us and to the world.

In July 2000, Dr. Spencer assumed the newly created position of president and CEO of the Association of Schools of Public Health (ASPH). In August 2013, he led the transformation of ASPH to a new organization, the Association of Schools and Programs of Public Health (ASPPH). His intellect, passion, leadership, and compelling ethical values were treasured by all in the ASPPH community.

Nationally and internationally recognized for his clinical public health work, research endeavors in infectious disease prevention and control, and authorship of more than 100 publications, Dr. Spencer was uniquely able to speak on both practice and research perspectives. His combined eight years as a dean of two prestigious schools gave him insight into university politics, education, and academic public health.

A member of many committees, boards, and professional societies, including the National Academy of Medicine, Dr. Spencer was most proud of co-founding the Interprofessional Education Collaborative (IPEC) with his medical, nursing, pharmacy, and dentistry peers in 2009, where he had served as chair of the board.

In recent years, Dr. Spencer was frequently called upon to speak to students, both prospective students in public health and those already active in the field he came to love and champion. A reserved man, he dug deep into the many lessons he learned traveling the globe and through his professional and personal experiences, to prepare remarks that could inspire the next generation of public health professionals. He often spoke about the enormous potential of individuals working purposefully, through barriers and across cultures, for the health of the public and the value of each and every person’s potential to make a difference. This quote from a recent speech he gave to students rings true to all of us who knew Dr. Spencer and who wake up every day excited to continue our work to improve the public’s health:

“Public health is filled with heroes, both well known and unknown. They are visible on the national or international stage or they work quietly in communities with families and individuals. When they do their job, they often become invisible.”

Dr. Spencer often summarized his thoughts with the phrase, “at the end of the day.” To quote him, “at the end of the day,” we are left with a deep sadness and a lasting legacy generated by his energy, vision, and passion for doing the right thing, and the recognition of what one person can accomplish for the sake of many.

POLICY AND ADVOCACY

ASPPH Shares Policy Priorities with Presidential Candidates

During the summer, ASPPH developed a 12-page white paper, Academic Public Health's Priorities for America, intended to inform the Presidential candidates and their transition teams. The document focuses on advancing public health education, science, and practice as the basis of improving population health. ASPPH calls on the new Administration to make public health a national priority and advance the research, training, and other actions necessary to protect and promote health for all our citizens. The paper was authored by the members of the ASPPH Legislative Committee.

Federal Funding Continues as Top Priority for ASPPH

ASPPH's fiscal year 2016 funding priorities were established by the ASPPH Legislative Committee and shared with Congress during member and staff discussions throughout the year. ASPPH sent numerous standalone and coalition letters to key legislators in support of its legislative agenda. Numerous face-to-face meetings were held with Senators, Representatives, and staff during the Congressional Session. ASPPH sponsored a "Hill Day" in late February that engaged deans and program directors as advocates.

All of ASPPH's priorities were funded in fiscal year 2016. These programs are:

CDC Prevention
Research Centers
\$25,461,000
(level)

CDC Centers for
Public Health
Preparedness
\$8,200,000
(an increase of
\$0.02 million)

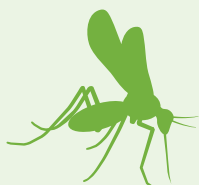
CDC NIOSH
Education and
Research Centers
\$28,500,000
(an increase of
\$1.055 million)

CDC NIOSH
Agricultural Forestry
and Fishing Centers
\$25,000,000
(an increase of
\$1.0 million)

HRSA Public
Health Training
Centers
\$9,864,000
(level)

Other Activities

Throughout the year, ASPPH was an active member of the informal Zika coalition, led by the March of Dimes. ASPPH lobbied for the Zika supplemental funding request of the Administration.



ASPPH joined an *amicus* brief to the Supreme Court in favor of the University of Texas, Austin's position in support of holistic admissions policies. In a June decision, the Supreme Court upheld ASPPH's position in one of the most important affirmative action cases in years.

MAY 6: ASPPH wrote to key FDA leaders in support of the FDA's final regulations that placed E-cigarettes and other new tobacco products under federal oversight for the first time. ASPPH Chair Gary Raskob (Oklahoma) wrote, "While the arduous and lengthy regulatory process has been frustrating, we are very pleased that the final rule gives paramount consideration to the health of the public and not the commercial interests of manufacturers and vendors. The members of ASPPH appreciate your strong support of the final rule, which we believe will reduce the impact and suffering caused by the use of tobacco products." ASPPH also wrote to Hill leaders opposing efforts to legislatively overturn the FDA regulations.

ASPPH Advances Prevention Research in the Cancer Moonshot

On March 21, ASPPH organized a letter to Vice President Biden and Congressional leaders, signed by more than 70 deans and directors of schools and programs of public health, expressing concern that the Cancer Moonshot initiative “may be undervaluing the vital role that public health and prevention have played and must continue to play in reducing cancer incidence and mortality.” The academic public health leaders wrote, “We urge you to pay careful attention to the balance between treatment and prevention-related investments. The development of new and innovative therapeutic cancer interventions is vital, but history has shown that the greatest impact in reducing cancer mortality rates has come from preventing cancers. While curative treatments often appear more exciting to the public, investments in public health and prevention research hold even more promise for both short- and long-term reductions in cancer incidence and mortality rates. Developing cancer cures is essential, but controlling cancer is also a policy and public health challenge. We must operate on both fronts.” The letter was published in *Lancet Oncology*.

Population Health Initiatives Expand

Under the leadership of the ASPPH Population Health Leadership Group, ASPPH’s initiatives to promote population health continue to expand. A detailed survey of the membership was completed in September and a set of structured interviews with external stakeholders was completed in October. The results of these initiatives will be released in early 2017. Both initiatives were intended to identify existing capabilities and opportunities for academic public health to advance population health, as well as challenges that may be hindering needed collaborations.



JUNE 20: ASPPH wrote to key House and Senate appropriators, urging them “to oppose any efforts to reduce, eliminate, or condition CDC funding related to gun violence prevention research or critical public health surveillance on violent deaths.” ASPPH said that the current legislative language barring any research that would “advocate or promote gun control” is “inhibiting research freedom and, perhaps inadvertently, restricting research that is in the national interest.” ASPPH urged Congress to “explicitly fund this important research.”

OCTOBER 20: ASPPH hosted a webinar with Lisa M. Lee, executive director of the Presidential Commission for the Study of Bioethical Issues. She reviewed the Commission’s activities and the resources that are available to public health professionals.

NOVEMBER 29: ASPPH wrote to the House Rules Committee opposing using scheduled increases in the Prevention and Public Health Fund to pay for program increases in other programs.

NOVEMBER 30: ASPPH submitted testimony to the Health Subcommittee of the House Energy & Commerce Committee in support of the mission and processes of the U.S. Preventive Services Task Force.

DECEMBER 6: ASPPH sponsored a webinar on the election’s impact on academic public health. Guest speakers were former Congressman Henry Waxman and former HHS Deputy Secretary Bill Corr.

DATA CENTER

Member Data Informs Academic Public Health

ASPPH member data provides guidance to the work of ASPPH and its committees, sections, and forums, and it informs the internal operations for members and academic public health in general. Member data includes multiple data sources, accessible via dashboards on the ASPPH Data Center Member Portal. ASPPH now provides dashboards for SOPHAS Administrators, Undergraduate Public Health and Global Health Education Network members, and the NBPHE board of directors. Data collection also occurs through ASPPH Data Advisory Committee sanctioned surveys. These surveys may be one-time surveys to inform the immediate work of short-term workgroups or pilot surveys that lead to new data collections. For example, the 2014 ASPPH Graduate Employment Project survey laid the groundwork for adding graduate outcomes data collection to the ASPPH Annual Data Collection in 2016.

www.aspph.org/connect/data-center

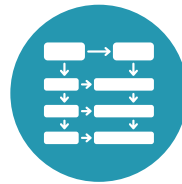
Data Sources



ASPPH Annual Data
Demographics, Graduate Outcomes, Faculty, Salary, and Financial Data



SOPHAS
Application Data



National Center for Education Statistics
Completions Data



Certified in Public Health
Examination Data

100

ASPPH Member Institutions participated in ASPPH Annual Data Collection

ASPPH Data Center Member Portal Over **500** active users

Deans and Program Representatives	107
Data Administrators	168
Data Users	236

Member Surveys

All ASPPH members participated in the surveys with members responding to an average of 4 surveys in 2016. The surveys informed the work of ASPPH Committees, ASPPH members, and public health partners.

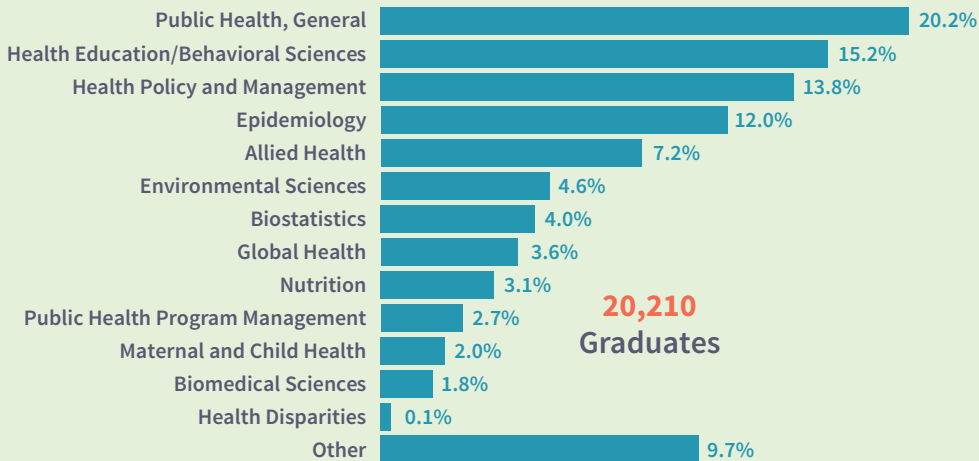


6

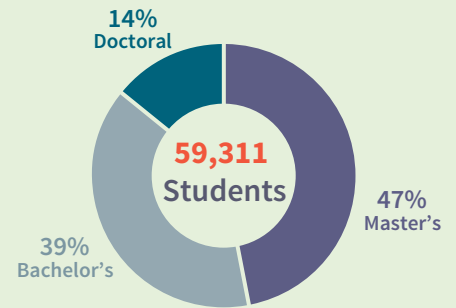
Member Surveys Sanctioned by the ASPPH Data Advisory Committee

2016 ASPPH Annual Data Collection Results

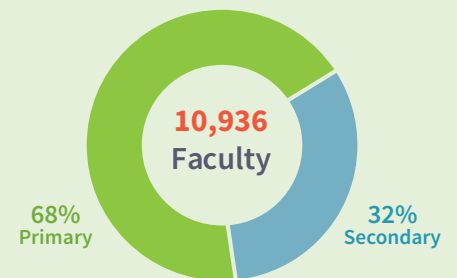
Specializations of Graduates



Student Degree Levels



Faculty Type



Building a Culture of Data-Driven Decision-Making

The ASPPH Data Center expanded efforts to foster a culture of data-driven decision-making among our members in 2016. The inaugural Data Center Skill-Building Workshop was held at the Annual Meeting with 60 members learning how to use ASPPH data to inform decision-making. The ASPPH Data Center Online Community provides data administrators with a forum for peer-to-peer discussions and learning. The Data Center Quarterly newsletter, launched in June, provides information on current data efforts and features the work of member data initiatives and best practices. The ASPPH Data Center also partnered with members to share these culture-building strategies at national conferences, including the 2016 Tableau Conference.

Engaging Academic Public Health Data Enthusiasts



SOPHAS

Apply to schools and programs of public health using ASPPH's centralized application service, SOPHAS.

SOPHAS continues its remarkable growth since 2006. Brown University School of Public Health and Central New York Master of Public Health Program (SUNY Upstate Medical University/Syracuse University) joined SOPHAS this cycle. SOPHAS continues to evolve in response to the needs of participating schools and programs – all members are welcome to participate in bi-monthly planning calls and semi-annual strategic planning meetings.

www.sophas.org

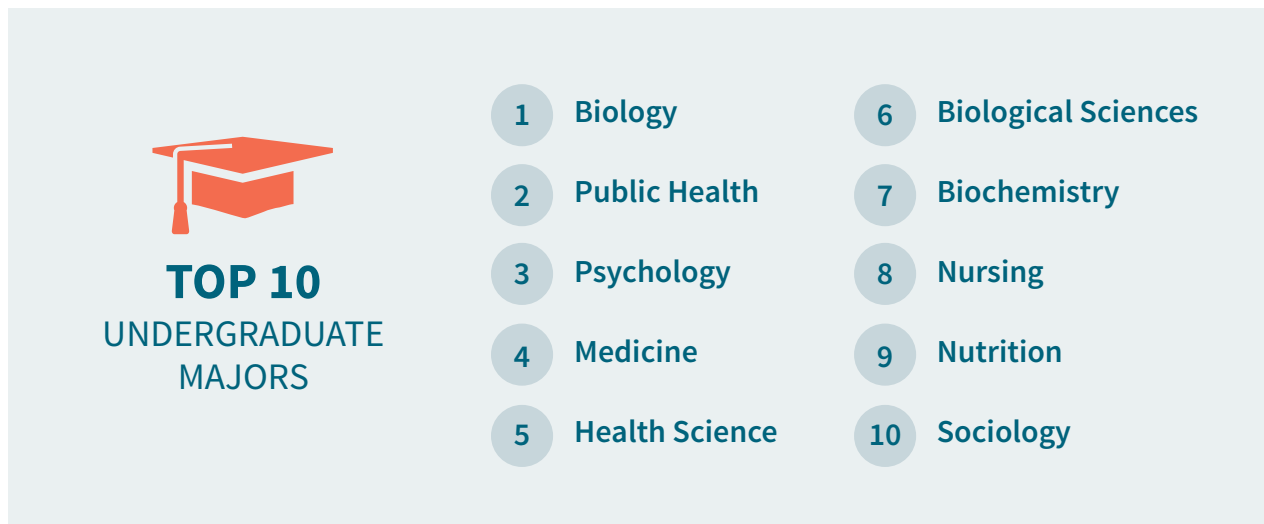
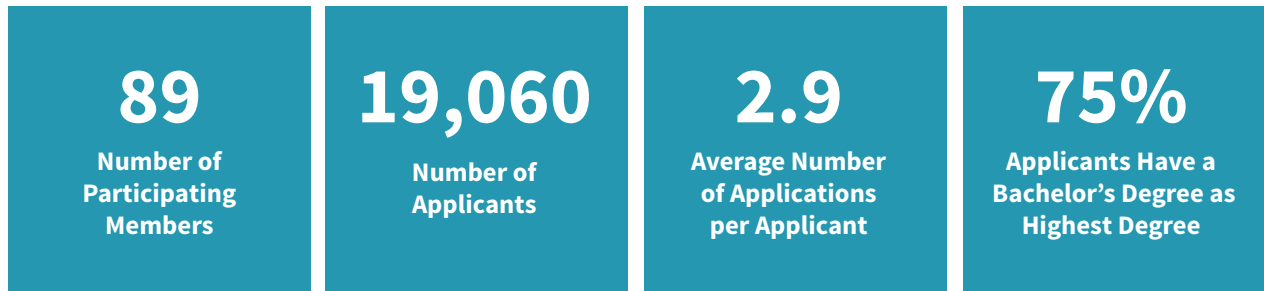
8.84%

increase in total applicants over the same time last year (as of 12/31/2016)



Cycle 10 Stats

(August 2015 – August 2016)



RECRUITMENT & STUDENT SERVICES

This year, ASPPH took on new initiatives to support student recruitment and provide professional development for student services staff. In addition to the highlights on this page, staff presented at the Gates Millennium Scholars Program in March, the USA Science & Engineering Festival in April, and the NAAHP Conference in June. ASPPH also revamped the This Is Public Health iPhone App, and launched a new Café Press Store for TIPH merchandise.

Health Professions Week (September 26-30)

ASPPH participated in the first annual week dedicated to increasing pathways to health professions.



19
Health Profession
Education
Associations
Hosted



3,691
Attendees



2
Virtual Events



21
Community Events

Student Services

Professional development opportunities for member student services staff.



3
Student Services
Spotlight Webinars



109
Average Attendees
Registered for
Student Services
Spotlight Webinars

This Is Public Health Graduate School Fairs

Third year of prospective graduate student events held across the country.

10 Events

9 Cities



63
Participating
Member Institutions



1,800+
Registrants

Virtual Fairs

Online chats for prospective graduate students held four times a year.

+11.8% Increase from 2015
Registrations



70
Participating
Member Institutions



5,943
Registrants

Viewbook

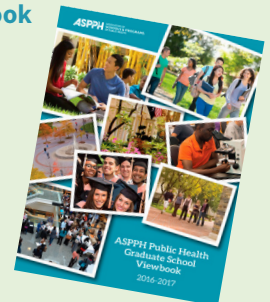
Digital asset showcasing ASPPH members; launched November 14.

www.aspph.org/study/#viewbook



2,500+
Views

25 Average New Prospects/Week



FELLOWSHIPS AND INTERNSHIPS

Preparing the Public Health Workforce

ASPPH, working with federal agencies and a national non-profit foundation, established fellowship programs to train recent graduates and alumni from member institutions. The goal of the ASPPH Fellowship program is to provide a high quality training experience in public health and global health under the guidance of an experienced mentor. Fellows gain experience in areas such as surveillance, program management, evaluation, informatics, statistics, epidemiology, and policy.

www.aspph.org/study/fellowships-and-internships



In 2016, ASPPH worked with three federal partners to offer four different training programs:

The National Highway Traffic Safety Administration: The ASPPH/NHTSA Public Health Fellowship Program

The U.S. Environmental Protection Agency: The ASPPH/EPA Environmental Health Fellowship Program

The Centers for Disease Control and Prevention: The ASPPH/CDC Allan Rosenfield Global Health Fellowship Program, and the ASPPH/CDC Public Health Fellowship Program.

In 2016, ASPPH embarked on a new partnership with the de Beaumont Foundation, and launched the **ASPPH Public Health Philanthropy Fellowship Program**. The program trains recent graduates across a range of public health philanthropy activities, including program development, strategic planning, grants review and monitoring, data analysis, and scientific inquiry. The inaugural fellow was placed in July 2016.



Placement Locations

CDC, EPA, NHTSA, and the deBeaumont Foundation.

19 countries where CDC works with the Ministries of Health

Bangladesh | Cambodia | Cameroon | China
Côte d'Ivoire | Ethiopia | Haiti | Lesotho | Malawi
Mozambique | Namibia | Rwanda | South Africa
Swaziland, Tanzania | Uganda | Vietnam | Zambia
Zimbabwe.

2016 Cycle

296

Applicants for
64 Positions

60

Fellows
Placed

65

Fellows
Renewed

1

Intern Placed
at ASPPH

“One of my most rewarding experiences was giving a presentation about law enforcement officer wellness at the Lifesavers National Conference on Highway Safety Priorities. I had the opportunity to encourage adopting a life-style of wellness through strategies to mitigate emerging health issues in the law enforcement community such as drowsy driving, caffeine intake, and pre-workout use.”



Monika Ramnarayan

ASPPH/NHTSA Public Health
Fellowship
Emory University Rollins
School of Public Health

“One of the most rewarding experiences I’ve had during my ASPPH fellowship is being part of the United States Global Change Research Program’s Climate Change and Human Health Workgroup, which is an interagency workgroup of which the EPA is a member.”

Michael Schmeltz

ASPPH/EPA Environmental
Health Fellowship
CUNY School of Public Health



“Working on HIV prevention in Swaziland, which has the highest HIV prevalence of any country in the world, and South Africa, which has the greatest number of people living with HIV, has been an incredibly powerful experience. It is very rewarding to continue my training in public health in some of the highest stakes environments imaginable, and to work with some of the sharpest minds in the field.”



Joseph Lawrence

ASPPH/CDC Allan Rosenfield
Global Health Fellowship
University of Pittsburgh
Graduate School of Public Health

“The most rewarding experience of my fellowship are the professionals I’ve been privileged to work with. My mentors are amazing. Every day, I work side-by-side with people who are making real change in their communities.”

Sara Wolicki

ASPPH/CDC Public Health
Fellowship
University of South Florida
College of Public Health



EDUCATION IN PUBLIC HEALTH

The nearly four year-long *Framing the Future* initiative, which laid the groundwork for a number of exciting changes that are already transforming academic public health, pointed ASPPH towards the need to tackle the implications of technology and education innovations. In response, the ASPPH Education Committee formed two workgroups.

Innovations in Pedagogy Workgroup

The workgroup will focus on capturing teaching innovations, professional development activities related to teaching, and the role of teaching in promotion and tenure decisions in our member institutions, both at the undergraduate and graduate teaching levels. The goal is to identify priorities for ASPPH to consider in advancing innovations for schools and programs of public health.

Baccalaureate/Masters Relationship Workgroup

The workgroup will explore issues associated with the path from, and the relationship between, undergraduate and master's degrees in public health. The goal is to provide guidance to schools, programs, and others who are exploring and studying the relationship between undergraduate and master's-level public health courses and degrees.

Undergraduate Network for Public Health and Global Health Education Expands

In an effort to keep members informed and connected, ASPPH created a quarterly newsletter, *Network News*, and the inaugural issue was published in September. The newsletter highlights innovative pedagogy, advocacy and policy information, membership news, and information on upcoming events.

www.aspph.org/connect/undergraduate-network

UNDERGRADUATE
Public Health and Global Health Education
..... **SUMMIT**
MARCH 20, 2016 • ARLINGTON, VA

213

Members

55

ASPPH Members

8

Network Members
Received SBP
Accreditation

Undergraduate Network Membership Initiatives



Networking
Events



Data for
Decision-Making



Faculty
Resources



Communication

ASPPH Presents Webinars

Webinars featured a wide array of presentations to address relevant and timely issues for member faculty, students, staff, administrators, and practice partners. Webinar topics included CEPH accreditation, student services spotlight series, and the impact of the 2016 elections on academic public health, among others. All webinars were recorded and are available on ASPPH.org.



4,495
Registrants



23
ASPPH Presents
Webinars

ASPPH Presents
 WEBINAR

Accreditation

ASPPH continues to engage closely with the Council on Education for Public Health (CEPH) as one of their co-founding corporate sponsors (along with the American Public Health Association). ASPPH advocates for excellence in accreditation standards and works to support criteria that fits school and program interests as well as students' needs and societal expectations for quality education for public health.

Over the last two years, ASPPH facilitated discussions, in many forms, and hundreds of members provided responses to CEPH on four rounds of the draft criteria. In October, CEPH disseminated a final version of the criteria. As members implement the criteria, ASPPH will highlight their promising practices.



Interprofessional Partnerships

Building on the work of the Population Health across All Professions Expert Panel, ASPPH continues its involvement in the Design & Health Research Consortium, sponsored by the American Institute of Architects (AIA), the AIA Foundation, and the Association of Collegiate Schools of Architecture (ACSA), to advance university-led research in the area of design and health and to promote and accelerate the translation of research into practice.

Two awardees, funded through an ASPPH cooperative agreement with CDC Academic Partnerships to Improve Health, completed their projects in 2016.

Morton McMichael Schoolyard: Design and Placemaking as a Strategy to Improve Physical Activity in Elementary School Children

The Drexel University Dornsife School of Public Health in partnership with the Drexel University Antoinette Westphal College of Media Arts & Design (Drexel University Urban Health and Design Team)

Access to Healthy Food and Neighborhood Walkability: Insights through Inter-Professional Curricula

University of Kansas Medical Center Department of Preventive Medicine & Public Health in partnership with the University of Kansas School of Architecture, Design and Planning

ASPPH co-sponsored, with ACSA, the first-ever joint conference, **Building for Health and Well-Being: Structures.Cities.Systems**, September 22-24, 2016 in Honolulu, HI.

IPEC

The Interprofessional Education Collaborative (IPEC) promotes and encourages constituent efforts to advance interprofessional learning experiences that help prepare future health professionals for enhanced team-based care of patients and improved population health outcomes. ASPPH, a founding member of IPEC, is actively engaged in efforts to promote and advance interprofessional learning experiences to improve population health outcomes.

IPEC Hosted Two Faculty Development Institutes:

Quality Improvement & Patient Safety (May 4-6) | Building a Framework for Interprofessional Education (October 5-7)



The National Center for Interprofessional Practice and Education (NCIPE) presented the first-ever Pioneer Award to IPEC.



IPEC released an updated version of the Core Competencies for Interprofessional Collaborative Practice.



IPEC approved nine additional members through a new institutional membership category.

ASPPH EVENTS

2016 Annual Meeting

March 20- 22 | Arlington, VA



Featured Plenary Speakers

Charles E. Cook, Jr., editor and publisher of The Cook Political Report;

Freeman A. Hrabowski, president of the University of Maryland Baltimore County;

Andy Haines, professor of public health and primary care at the London School of Hygiene and Tropical Medicine;

Sonia Angell, dep. commissioner, division of prevention and primary care, NYC Dept. of Health and Mental Hygiene;

Joseph Bankman, Ralph M. Parsons Professor of Law, Stanford University Law School;

Laurie Garrett, senior fellow for global health, Council on Foreign Relations; and

Julio Frenk, president, University of Miami.

Sections Retreat

June 22-24 | Scottsdale, AZ

[Academic Affairs](#) | [Academic Public Health Practice](#)
[Finance and Administration](#) | [Research](#)

The four ASPPH Sections participated in the plenary session as well as topic sessions specific to each track.

The opening plenary session “Diversity, Inclusion and Social Justice: Engaging Faculty, Staff and Students to Effect Change” featured **Kim R. Bobby**, director of the Inclusive Excellence Group of the American Council on Education.

2016 ASPPH
SECTIONS
RETREAT • June 22-24

Hotel Valley Ho, Scottsdale, AZ

Leadership Retreat

July 27-30 | San Diego, CA

The retreat provided attendees an opportunity for meaningful interactions. It featured two plenary speakers as well as time for small group discussions with colleagues.

Michael Tchong, professional speaker on innovation, trends, and technology, began the retreat with an opening plenary presentation focused on “pushing the innovation envelope.”

Nirav R. Shah, senior vice president and chief operating officer for clinical operations at Kaiser Permanente, presented on broader public health issues and challenges and the role of ASPPH Members.

2016 ASPPH
LEADERSHIP
RETREAT • July 27-30

Loews Coronado Bay Resort, Coronado (San Diego), CA

INFORMATION TECHNOLOGY

The Future is NOW!

2016 was a watershed year for ASPPH Information Technology. After three years of modernizing our technology infrastructure, embracing open-source software development, and weaving technical innovation into the fabric of ASPPH member services, we are more nimble, value-driven, and people-focused than ever before.

Our migration to the cloud and adoption of DevOps philosophies have opened a new realm of technical possibilities and increased ASPPH's capacity to create exceptional digital experiences for our members. Our continued adherence to agile software development processes and IT Service Management (ITSM) best practices allows us to deliver those experiences much faster while at the same time increasing the quality and reliability of our products.



DevOps

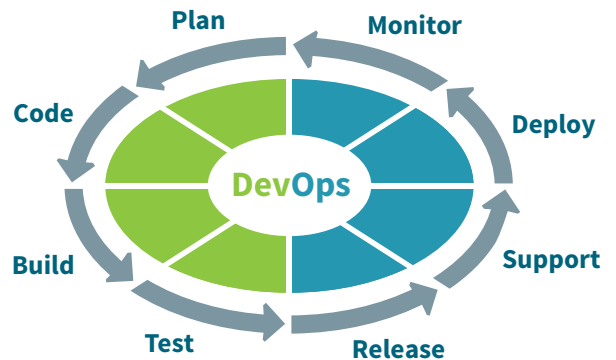
DevOps is a new approach that helps the IT team deliver more services and products to our members in a shorter amount of time.

It allows ASPPH to:

Foster Team Collaboration

Increase Efficiency

Deploy Software Products More Quickly



2016 Web Development

41

Website Improvements

3

Full Website Redesigns

- Public Health Jobs
- Fellowships and Internships Web Application
- ASPPH Intranet



Total

46

Web Deployments

2

New Products

- Salesforce CRM
- Development Portfolio

ASPPH's Guiding Principles of Software Development



Enable business value



Keep the end-user in mind



Use modern tools & best practices



Use agile methodologies



Deploy minimal viable products (MVP)



Quality assurance testing



Documentation



Operations supports development (DevOps)



Services is a continuum of development (ITSM)



Aim to innovate

Security

IT security is a high priority for ASPPH. As we collect more and more member data, the need to secure, control, and backup that data becomes paramount to members' continued trust and confidence in our technology abilities and competence.

ASPPH continually strives to improve IT security by following a three-pronged strategy:

Layered Defense

User Awareness

Rapid Response & Recovery

ASPPH AWARDS



ASPPH Welch-Rose Award

Distinguished Service to Academic Public Health

Julio Frenk, MD, PhD, MPH

University of Miami



ASPPH Teaching Excellence Award

Leona Kay Bartholomew, EdD, MPH

University of Texas School of Public Health

**awarded posthumously*



ASPPH Academic Public Health Practice Excellence Award

Tim Byers, MD, MPH

*Colorado School of Public Health: University of Colorado |
Colorado State University | University of Northern Colorado*



ASPPH Early Career Public Health Teaching Award

Kate Winskell, PhD

Emory University Rollins School of Public Health





ASPPH Early Career Public Health Research Award

Matthew Freeman, PhD, MPH

Emory University Rollins School of Public Health



ASPPH Student Services Excellence Award

Mary Ann Smith, PhD

University of Texas School of Public Health



RIEGELMAN AWARD

Excellence in Undergraduate Public Health Education

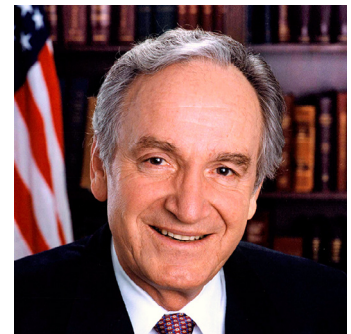
Sara Mackenzie, MD, MPH

University of Washington School of Public Health



ASPPH Special Recognition Award

The Honorable Tom Harkin
Former U.S. Senator from Iowa



NBPHE

www.nbphe.org

ASPPH is the parent organization of the National Board of Public Health Examiners (NBPHE).

Over 1,100 individuals sat for the CPH exam in 2016, bringing the total number of individuals certified in public health to **over 5,500**.



The CPH continues to evolve. In 2016, the NBPHE board introduced both instant score results and digital badging.

The use of the CPH exam as an academic assessment tool continues to grow. Ten schools and programs are now requiring the CPH exam.

CPH Certified in
Public Health

PHR

www.publichealthreports.org

Public Health Reports (PHR) is the official journal of the U.S. Public Health Service and the U.S. Surgeon General. It is published in collaboration with the Association of Schools and Programs of Public Health (ASPPH). PHR has been a resource for the public health community since 1878.



In July, SAGE Publishing began publishing PHR. “One of the journal’s top goals is modernization of our website and publication technology.” said Dr. Harrison C. Spencer, former President and CEO, ASPPH. “We believe that the new relationship between ASPPH and SAGE Publishing will be a huge step forward for the journal.” The editor in chief of the journal is Dr. Frederic E. Shaw, a senior medical officer at the Centers for Disease Control and Prevention in Atlanta, GA.





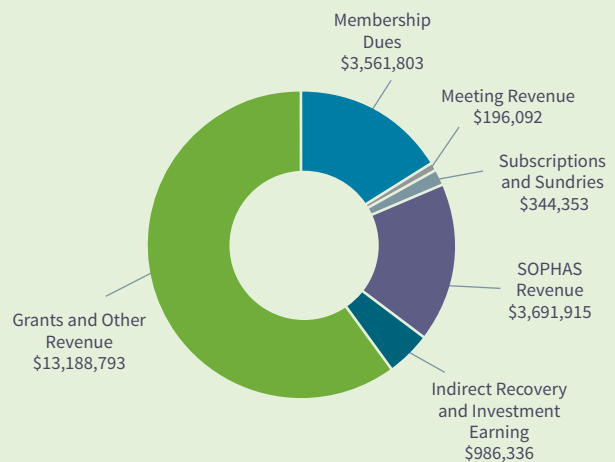
www.publichealthjobs.org

The new PublicHealthJobs.org offers streamlined functionality and new features for both job seekers and employers. The goal of Public Health Jobs is to serve as the recommended search engine for public health job opportunities and to continue to highlight the field of public health as a meaningful career choice.

FINANCIAL DATA

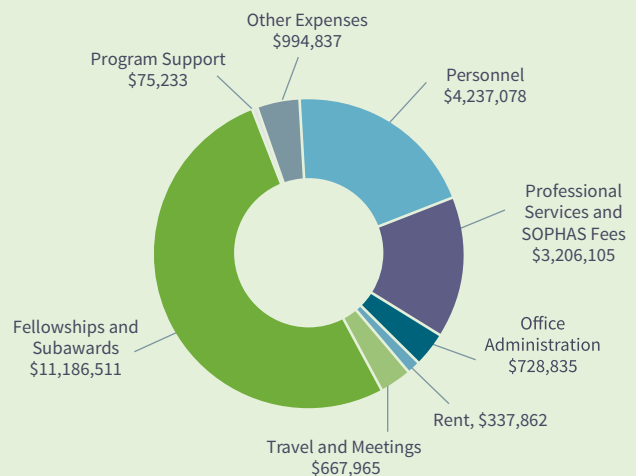
Revenues

Membership Dues	\$3,561,803
Meeting Revenue	\$196,092
Subscriptions and Sundries	\$344,353
SOPHAS Revenue	\$3,691,915
Indirect Recovery and Investment Earnings	\$826,336
Grants and Other Revenue	\$13,188,793
Total	\$21,809,292



Expenses

Personnel	\$4,237,078
Professional Services and SOPHAS Fees	\$3,206,105
Office Administration	\$728,835
Rent	\$337,862
Travel and Meetings	\$667,965
Fellowships and Subawards	\$11,186,511
Program Support	\$75,233
Other Expenses	\$994,837
Total	\$21,434,426



Balances

Assets

Cash	\$1,323,683
Investments	\$3,045,764
Accounts Receivable	\$3,560,765
Equipment and Non-Current Assets	\$707,861
Total Assets	\$8,638,073

Liabilities

Accounts Payable	\$1,285,599
Deferred Revenue	\$2,533,530
Refundable Advances	\$284,853
Other Liabilities	\$798,994
Total Liabilities	\$4,902,976

*Draft financial statements. Final audited financials for FY16 will be available Spring 2017.

MEMBER INSTITUTIONS

ASPPH Members

- **A.T. Still University** College of Graduate Health Studies
- **Augusta University** MPH Program
- **Boston University** School of Public Health
- **Brown University** School of Public Health
- **Central New York** Master of Public Health Program
- **Charles R. Drew University of Medicine and Science** MPH Program in Urban Public Health
- **Claremont Graduate University**
- **Colorado School of Public Health:** University of Colorado | Colorado State University | University of Northern Colorado
- **Columbia University** Mailman School of Public Health
- **CUNY** School of Public Health
- **Dartmouth** - Geisel School of Medicine MPH Program
- **Des Moines University** Department of Public Health
- **Drexel University** Dornsife School of Public Health
- **East Tennessee State University** College of Public Health
- **Eastern Virginia Medical School** - Old Dominion University MPH Program
- **Emory University** Rollins School of Public Health
- **Florida A&M University** Public Health Program
- **Florida International University** Robert Stempel College of Public Health and Social Work
- **George Mason University** MPH Program
- **George Washington University** Milken Institute School of Public Health
- **Georgia Southern University** Jiann-Ping Hsu College of Public Health
- **Georgia State University** School of Public Health
- **Harvard** T.H. Chan School of Public Health
- **Hofstra University** MPH Program
- **Icahn School of Medicine at Mount Sinai,** Graduate Program in Public Health
- **Indiana University** Richard M. Fairbanks School of Public Health - **Indianapolis**
- **Indiana University** School of Public Health - **Bloomington**
- **Johns Hopkins** Bloomberg School of Public Health
- **Kent State University** College of Public Health
- **Loma Linda University** School of Public Health
- **Louisiana State University** Health Sciences Center School of Public Health
- **Loyola University Chicago** MPH Program
- **Mercer University** Master of Public Health Program
- **National Institute of Public Health of Mexico** (Instituto Nacional de Salud Publica)
- **New York Medical College,** School of Health Sciences and Practice, and Institute of Public Health
- **New York University** College of Global Public Health
- **Northeastern University** Master of Public Health Program in Urban Health
- **Northwestern University** Feinberg School of Medicine Programs in Public Health
- **Ohio State University** College of Public Health
- **Oregon Health & Science University/Portland State University** School of Public Health
- **Oregon State University** College of Public Health and Human Sciences
- **Pennsylvania State University** Public Health Program
- **Rutgers** School of Public Health
- **Saint Louis University** College for Public Health and Social Justice
- **San Diego State University** Graduate School of Public Health
- **St. George's University** Department of Public Health and Preventive Medicine
- **Stony Brook University** Program in Public Health
- **SUNY Downstate Medical Center** School of Public Health
- **Temple University** College of Public Health
- **Texas A&M Health Science Center** School of Public Health
- **Thomas Jefferson University,** College of Population Health - MPH Program
- **Touro University** - California MPH Program
- **Tufts University** School of Medicine, Public Health Program
- **Tulane University** School of Public Health and Tropical Medicine
- **UCLA** Jonathan and Karin Fielding School of Public Health
- **Uniformed Services University** of the Health Sciences Public Health Program
- **University at Albany SUNY** School of Public Health
- **University at Buffalo** School of Public Health and Health Professions
- **University of Alabama at Birmingham** School of Public Health
- **University of Alberta** School of Public Health
- **University of Arizona** Mel and Enid Zuckerman College of Public Health
- **University of Arkansas for Medical Sciences** Fay W. Boozman College of Public Health
- **University of California, Berkeley** School of Public Health
- **University of California, Davis** MPH Program
- **University of California, Irvine** Program in Public Health
- **University of Cincinnati** College of Medicine MPH Program
- **University of Florida** College of Public Health and Health Professions
- **University of Georgia** College of Public Health
- **University of Illinois at Chicago** School of Public Health
- **University of Iowa** College of Public Health
- **University of Kansas** School of Medicine KU - MPH Program
- **University of Kentucky** College of Public Health
- **University of Louisville** School of Public Health and Information Sciences
- **University of Maryland School of Medicine,** MPH Program
- **University of Maryland** School of Public Health
- **University of Massachusetts-Amherst** School of Public Health and Health Sciences
- **University of Memphis** School of Public Health
- **University of Miami** Department of Public Health Sciences
- **University of Michigan** School of Public Health
- **University of Minnesota** School of Public Health
- **University of Nebraska Medical Center** College of Public Health
- **University of Nevada, Reno** School of Community Health Sciences
- **University of New Mexico** Public Health Program
- **University of North Carolina** at Charlotte Public Health Programs
- **University of North Carolina** Gillings School of Global Public Health
- **University of North Texas** Health Science Center School of Public Health
- **University of Oklahoma** Health Sciences Center College of Public Health
- **University of Pennsylvania** Master of Public Health Program
- **University of Pittsburgh** Graduate School of Public Health
- **University of Puerto Rico** Graduate School of Public Health
- **University of San Francisco** MPH Program
- **University of South Carolina** Arnold School of Public Health
- **University of South Florida** College of Public Health
- **University of Southern California** MPH Program
- **University of Texas Medical Branch** at Galveston Graduate Program in Public Health
- **University of Texas** School of Public Health
- **University of Virginia** MPH Program
- **University of Washington** School of Public Health
- **Vanderbilt University** Institute for Medicine and Public Health
- **Virginia Commonwealth University** MPH Program
- **Washington University in St. Louis** - Brown School Public Health Programs
- **West Virginia University** School of Public Health
- **Wright State University** MPH Program
- **Yale** School of Public Health

ASPPH Associate Members

- **National Taiwan University** College of Public Health
- **University of Wisconsin-Milwaukee** Joseph J. Zilber School of Public Health
- **Walden University** Master of Public Health Programs